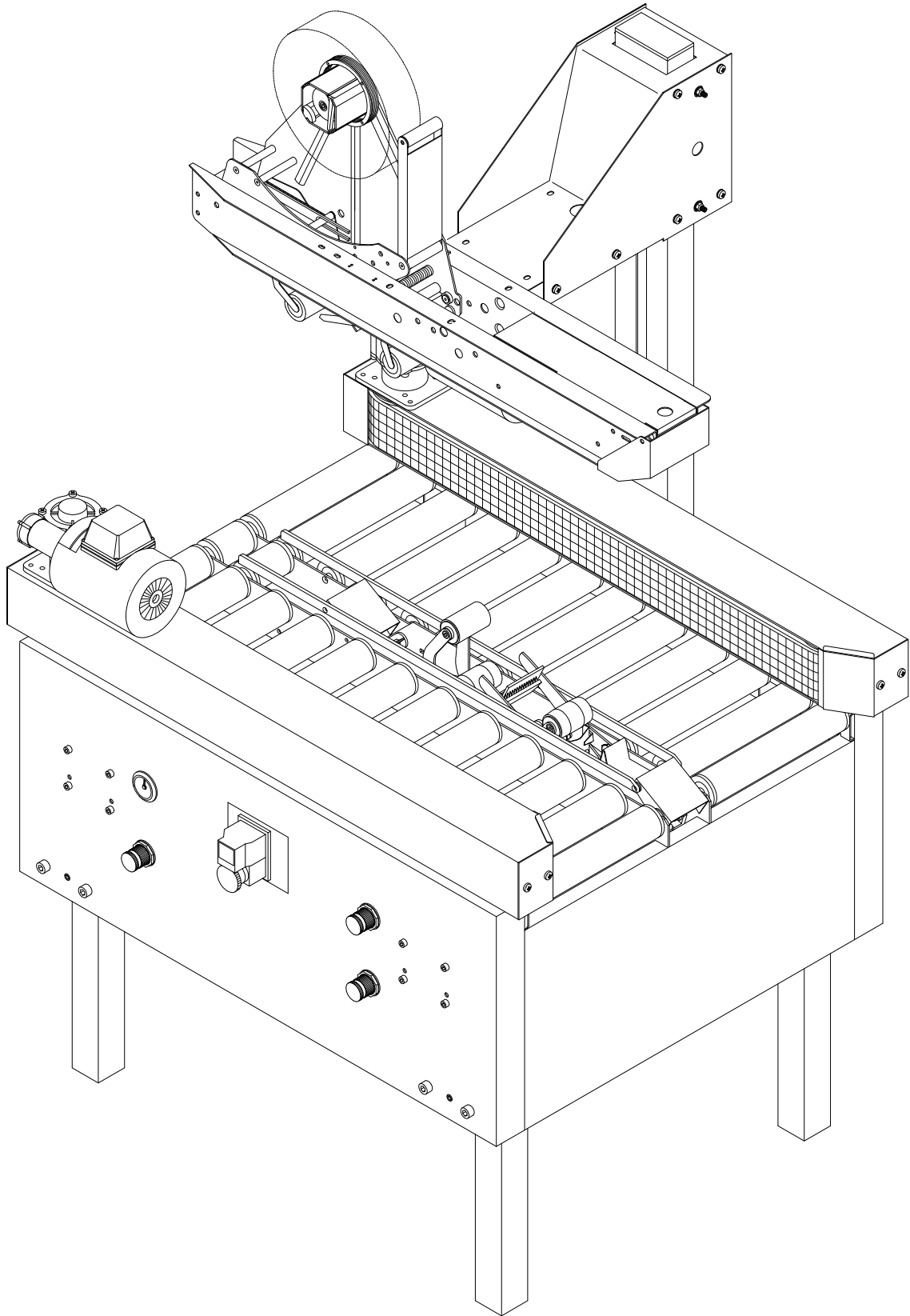


# Carton sealer T-55



# Table of contents

Notes	3
Information regarding spare parts lists	4
Body T-55	5
Leg complete for carton sealers	6
Guide assembly T-55-	7
Guide assembly T-55-	8
Guide housing T-55, T-602-	9
Cylinder arrangement 5-, T-55 T-602 FT-55/57	10
Cylinder arrangement 7-, T-55 FT-55/57	11
Pillar for side drive, chain drive T-55, T-602, FT-55/57	12
Driven side guide	13
Driven side guide	14
Motor	15
Gear SO40, collar position 1	16
Roller table T-55	17
Roller table T-55	18
Roller ø48, plastic	19
Pillar T-55	20
Pillar cylinder T-55	21
Quick pillar stop	22
Height adjustment unit PS, T-55	23
Top assembly T-55	24
Photo cell arrangement, T-55-	25
Pneumatic arrangement, T-55	26
Air set	27
Regulators	28
Valve assembly	29
Valve assembly	30
Set of tools	31
Pneumatic diagram for T-55 bottom sealer.	32
Pneumatic diagram for T-55 std.	33

## Information regarding spare parts lists

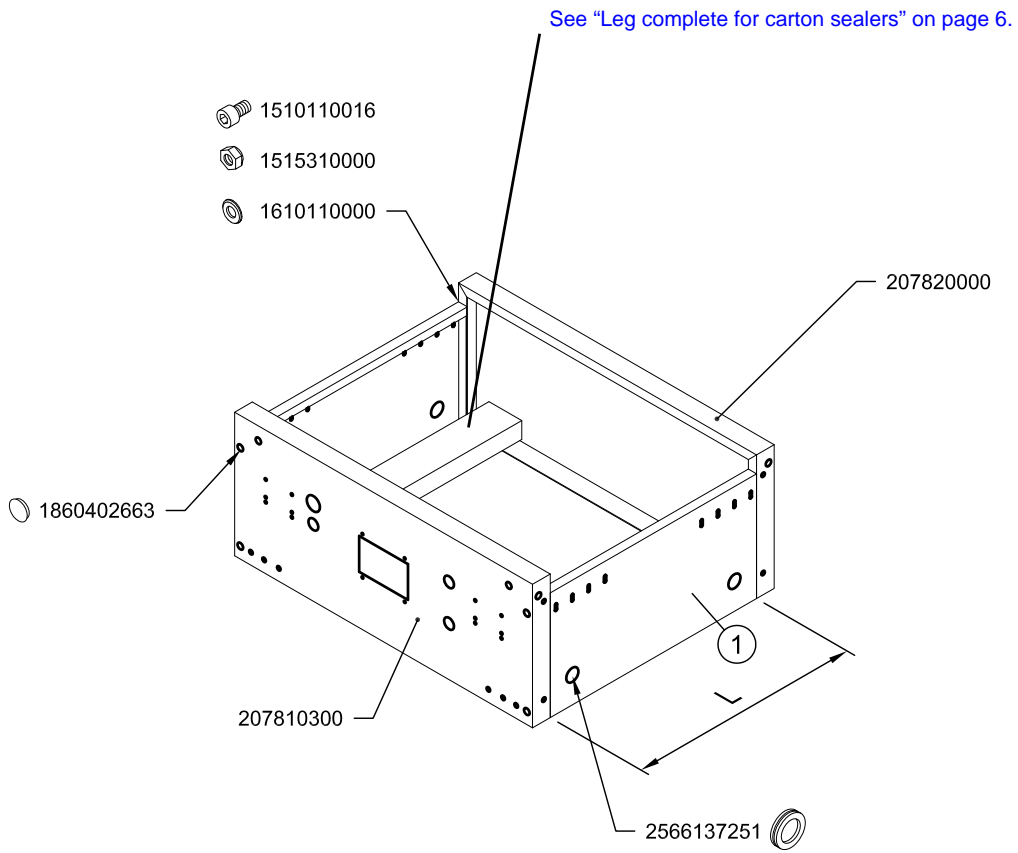
All dimensions are in millimetres (mm).

On ordering of spare parts, please refer to SOCO SYSTEM item number. If parts for special versions, e.g. stainless steel, are desired, please state this when ordering.

Information regarding spare parts lists

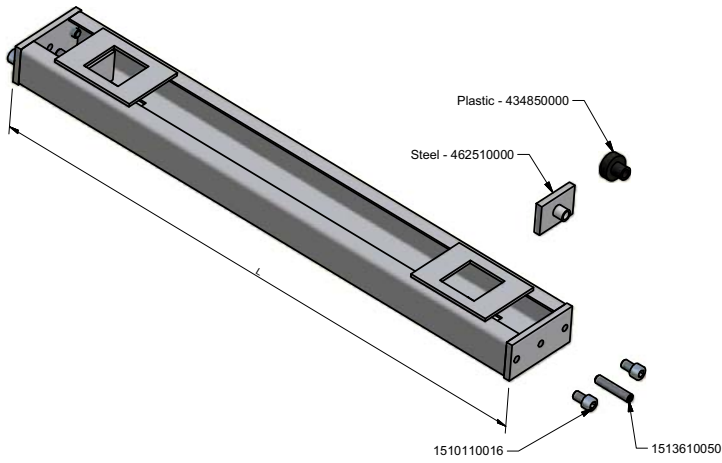
# Body T-55

L	1
630	208335010
840	208337010

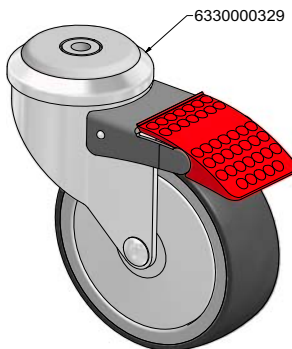
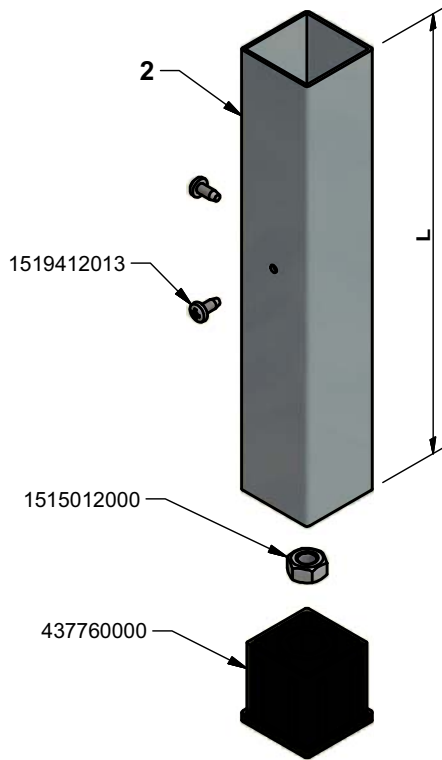


# Leg complete for carton sealers

Leg complete for carton sealers



L	2
505	434823000
695	434824000
735	434825000
945	434827000
1250	434821000
1526	434821200

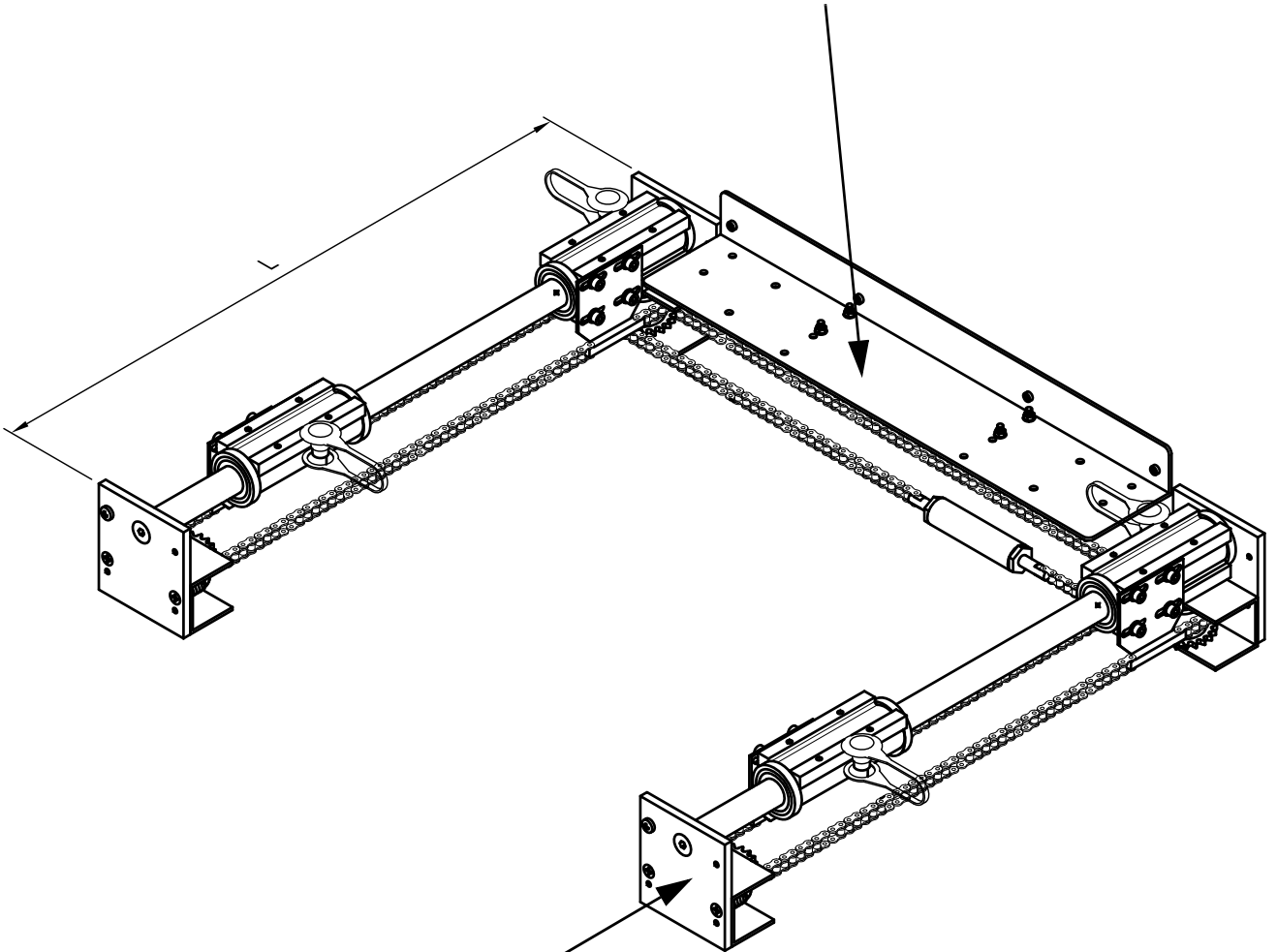


L	1
185	434870185
285	434870285
385	434870385
485	434870485
585	434870585
685	434870685
785	434870785

# Guide assembly T-55

L	
738	436225000
949	436227001

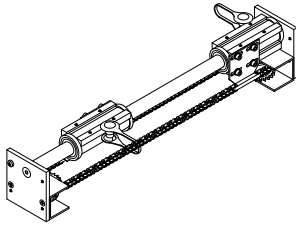
See "Cylinder arrangement 5-, T-55 T-602 FT-55/57" on page 10.  
See "Cylinder arrangement 7-, T-55 FT-55/57" on page 11.



See "Guide assembly T-55" on page 8.

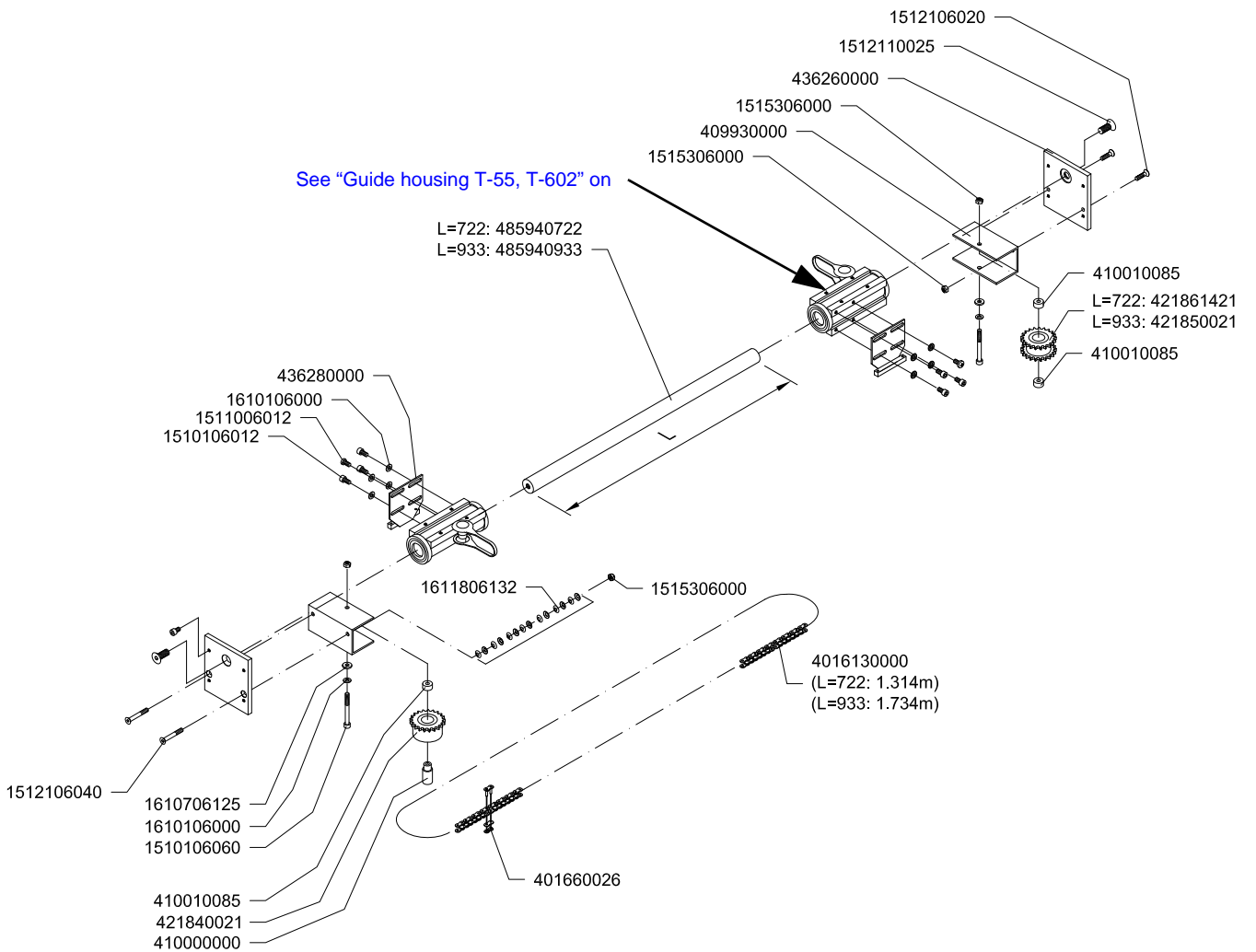
# Guide assembly T-55

L	
722	304855000
933	304857001



See "Guide housing T-55, T-602" on

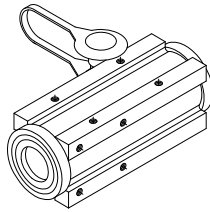
L=722: 485940722  
L=933: 485940933



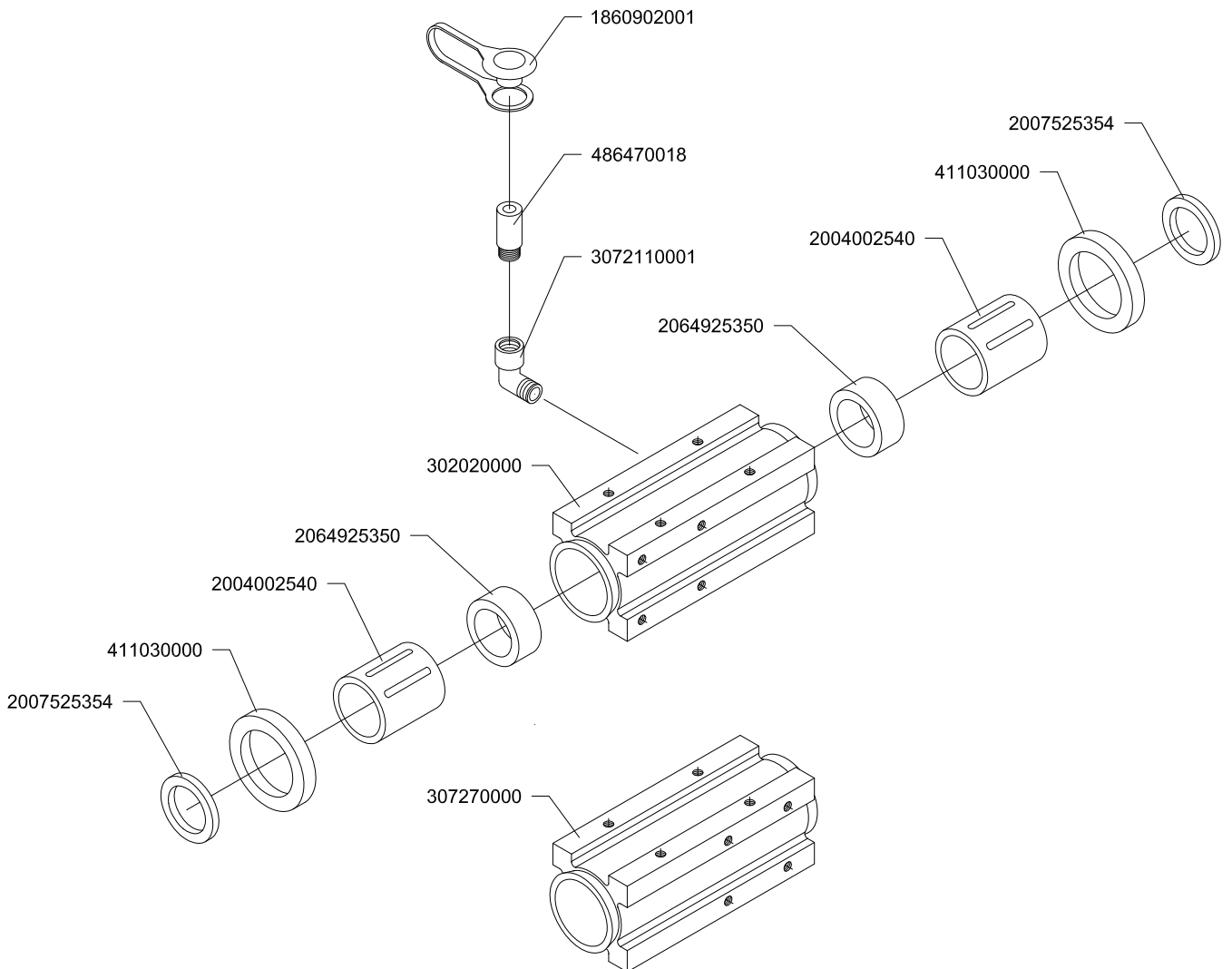
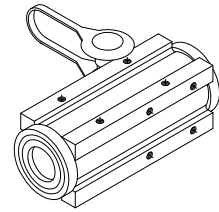
# Guide housing T-55, T-602

Guide housing T-55, T-602

Incl. 411030000: 421870001  
Excl. 411030000: 421870011

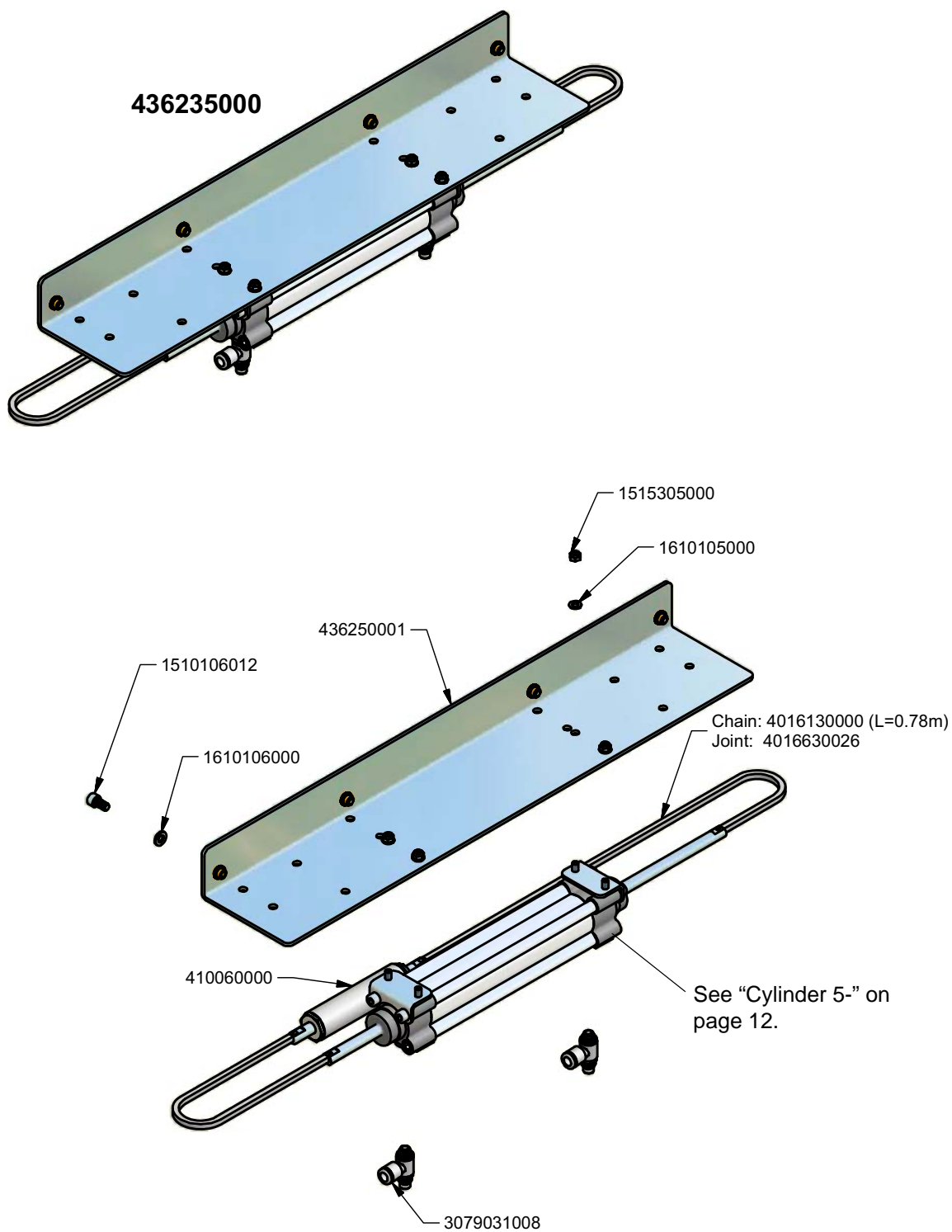


Incl. 411030000: 421870002  
Excl. 411030000: 421870012



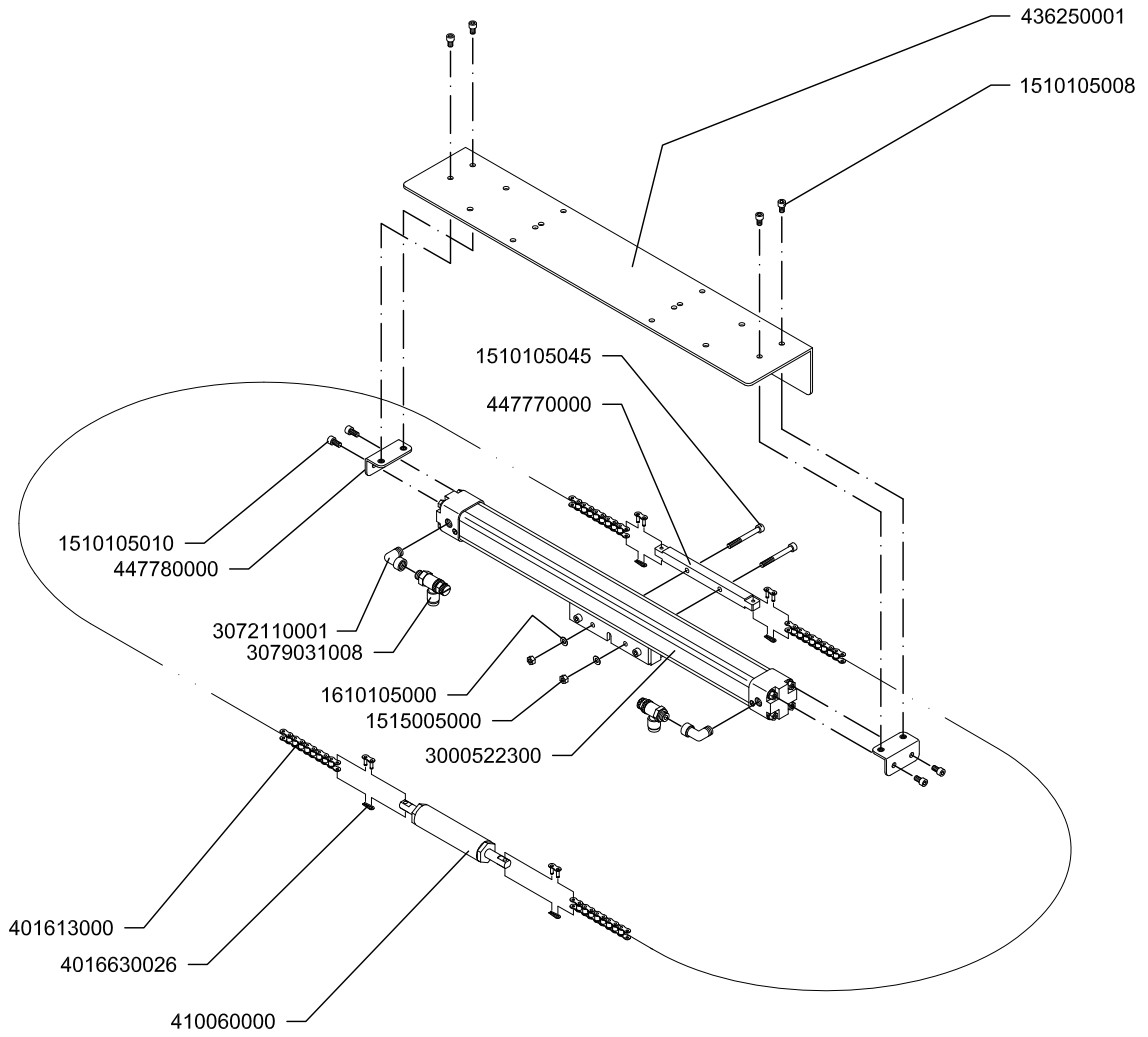
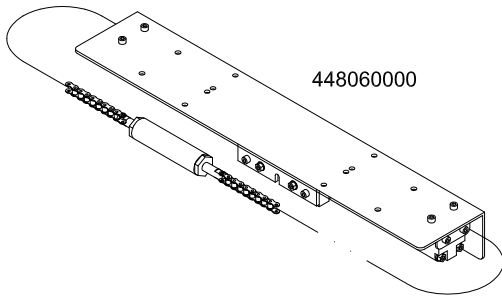
# Cylinder arrangement 5-, T-55 T-602 FT-55/57

Cylinder arrangement 5-, T-55 T-602 FT-55/57



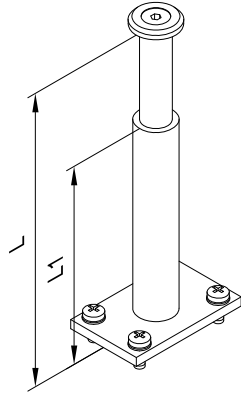
# Cylinder arrangement 7-, T-55 FT-55/57

Cylinder arrangement 7-, T-55 FT-55/57



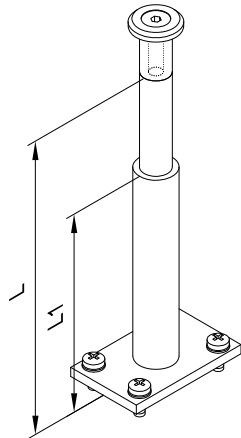
# Pillar for side drive, chain drive T-55, T-602, FT-55/57

Pillar for side drive, chain drive T-55, T-602, FT-55/57



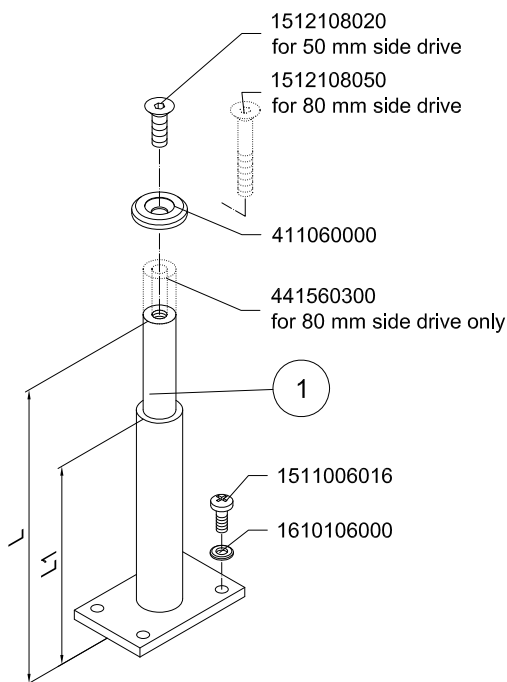
**Table 1: 50 mm side drive**

L	L1	
183	120	433180180
193	130	433180190
233	170	433180230
283	220	433180280
333	270	433180330
383	320	433180380



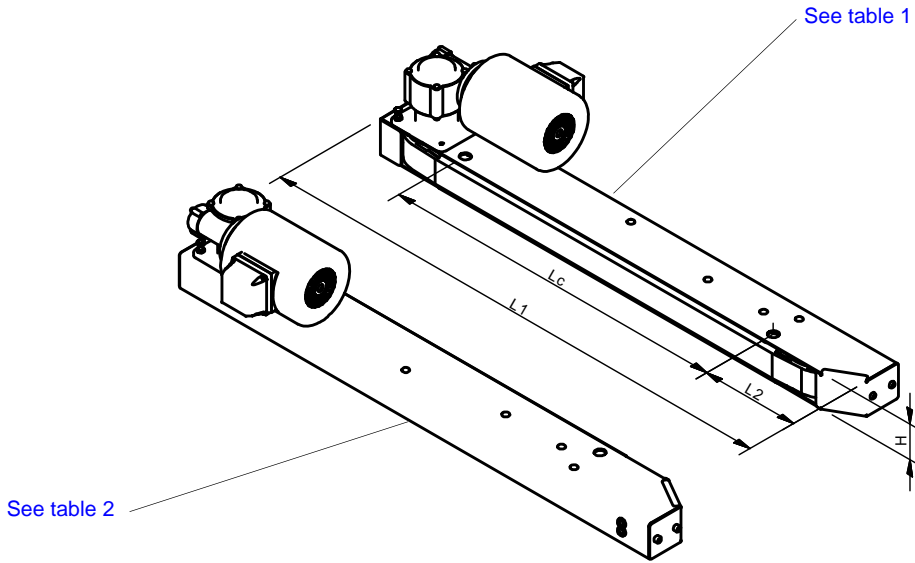
**Table 2: 80 mm side drive**

L	L1	
183	120	433180210
193	130	433180220
233	170	433180260
283	220	433180310
333	270	433180360
383	320	433180410



L	L1	1
183	120	302010180
193	130	302010190
233	170	302010230
283	220	302010280
333	270	302010330
383	320	302010380

# Driven side guide



**Table 1:**

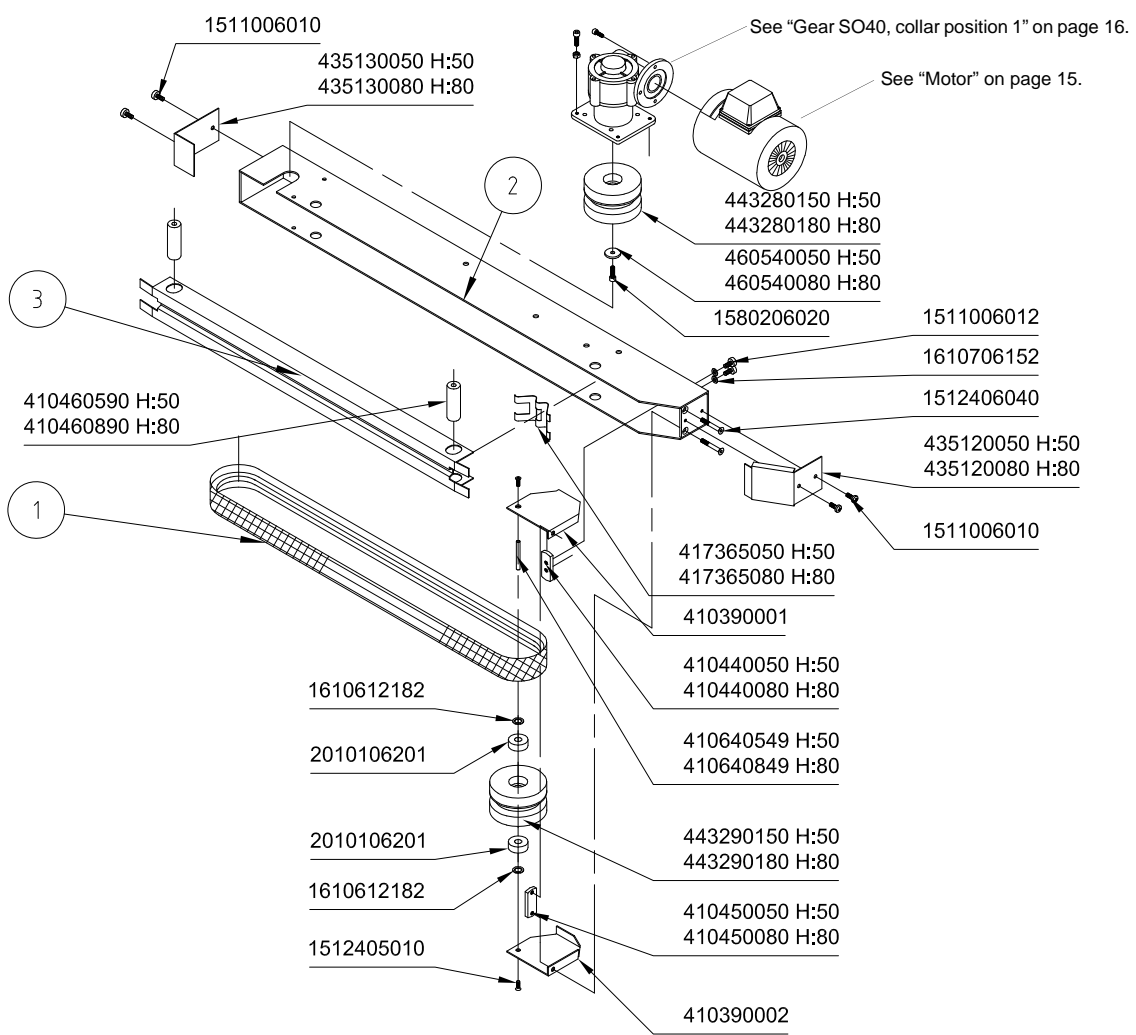
L1	L2	Lc	H nominal	Belt height	Item no.
980	185	640	50	45	4610855XX
1180	185	640	50	45	4610857XX
1180	385	640	50	45	4610858XX
1380	185	640	50	45	4610856XX
1380	385	640	50	45	4510850XX
1380	585	640	50	45	4510896XX
980	185	640	80	75	4610851XX
1180	185	640	80	75	4610853XX
1180	385	640	80	75	4610854XX
1380	185	640	80	75	4610852XX
1380	385	640	80	75	4610859XX
1380	585	640	80	75	4610892XX
765	185	420	50	45	4610955XX

**Table 2:**

L1	L2	Lc	H nominal	Belt height	Item no.
980	185	640	50	45	4610865XX
1180	185	640	50	45	4610867XX
1180	385	640	50	45	4610868XX
1380	185	640	50	45	4610866XX
1380	385	640	50	45	4510860XX
1380	585	640	50	45	4510886XX
980	185	640	80	75	4610861XX
1180	185	640	80	75	4610863XX
1180	385	640	80	75	4610864XX
1380	185	640	80	75	4610862XX
1380	385	640	80	75	4610869XX
1380	585	640	80	75	4610882XX
765	185	420	50	45	4610965XX

State voltage and gearing. \_\_\_\_\_

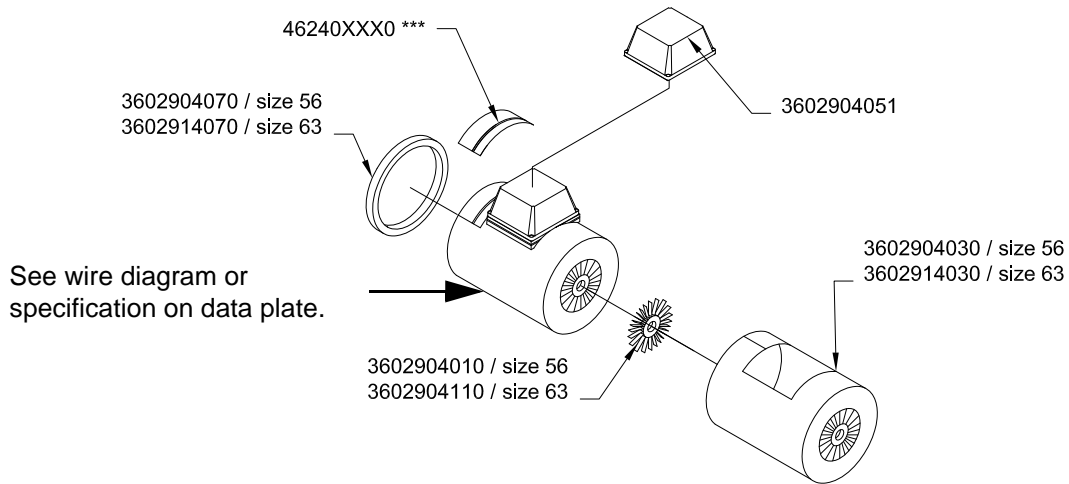
## Driven side guide



L1	L2	Lc	H nominal	1	2	3
980	185	640	50	4170101870	As shown: 207601591 Opp. hand: 207602591	304651591
1180	185	640	50	4170102265	2076000514	304651514
1180	385	640	50	4170102265	2076000514	304651514
1380	185	640	50	4170102660	2076000534	304651534
1380	385	640	50	4170102660	2076000534	304651534
1380	585	640	50	4170102660	2076000534	304651534
980	185	640	80	4170201870	As shown: 207601891 Opp. hand: 207602891	304651814
1180	185	640	80	4170202265	2076000814	304651814
1180	385	640	80	4170202265	2076000814	304651814
1380	185	640	80	4170202660	2076000834	304651834
1380	385	640	80	4170202660	2076000834	304651834
1380	585	640	80	4170202660	2076000834	304651834
765	185	420	50	4170101430	As shown: 211831571 Opp. hand: 211832571	311481571

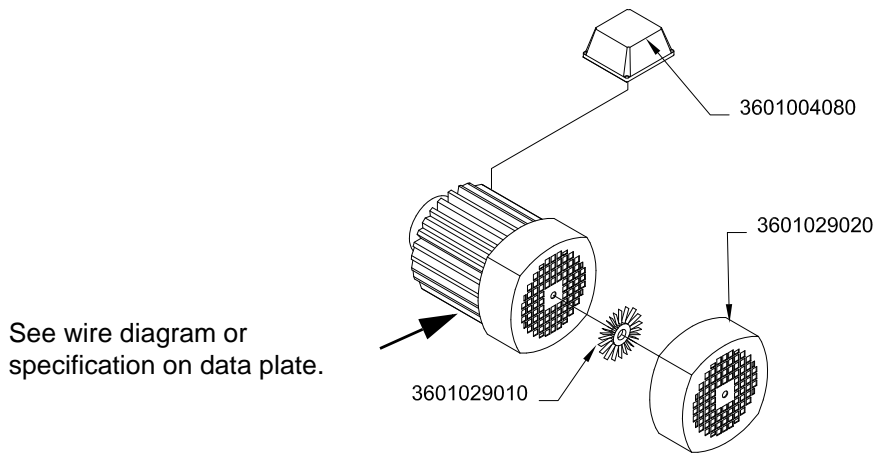
# Motor

## EMOD



\*\*\* State motor specifications.

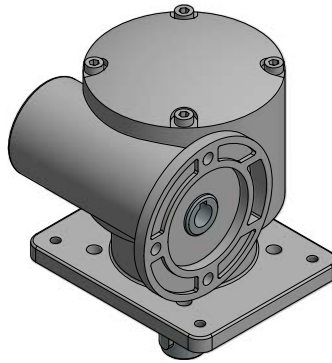
## LEROY SOMER



# Gear SO40, collar position 1

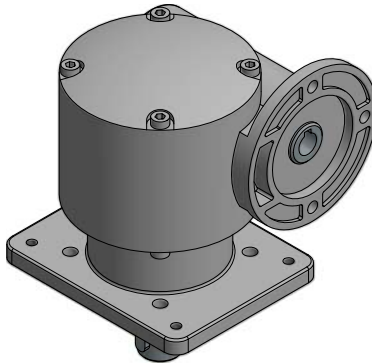
**Table 1: Right gear**

Gear ratio	Standard gear
7.5:1	3701836116
10:1	3701807106
15:1	3701807116
20:1	3701807126
25:1	3701807136

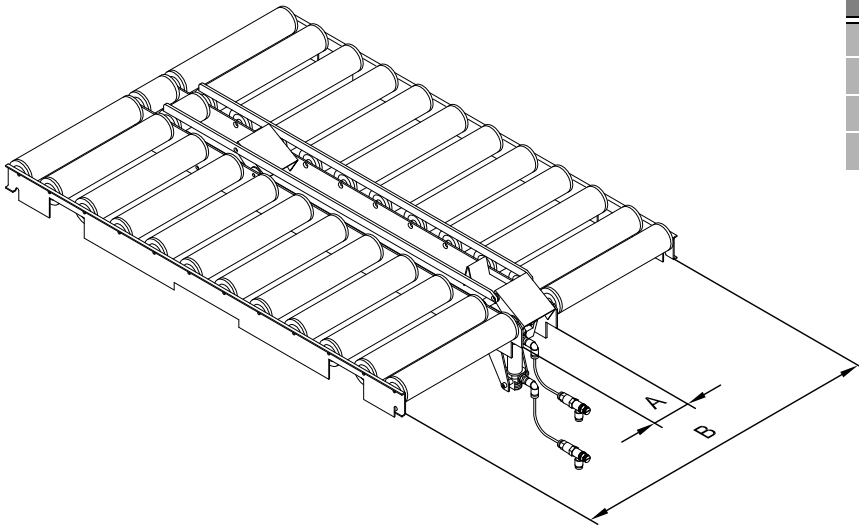


**Table 2: Left gear**

Gear ratio	Standard gear
7.5:1	3701836216
10:1	3701807206
15:1	3701807216
20:1	3701807226
25:1	3701808236



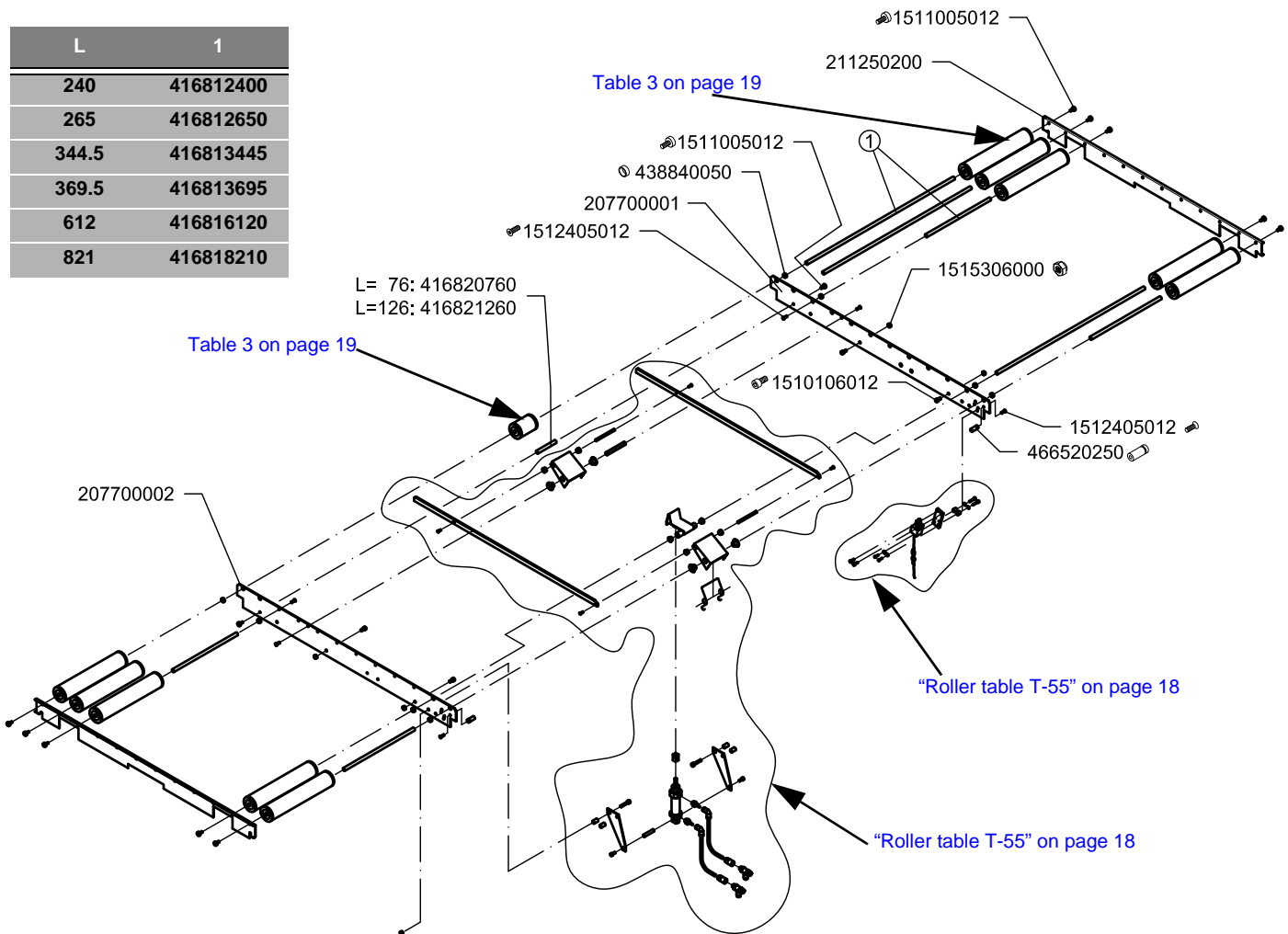
# Roller table T-55



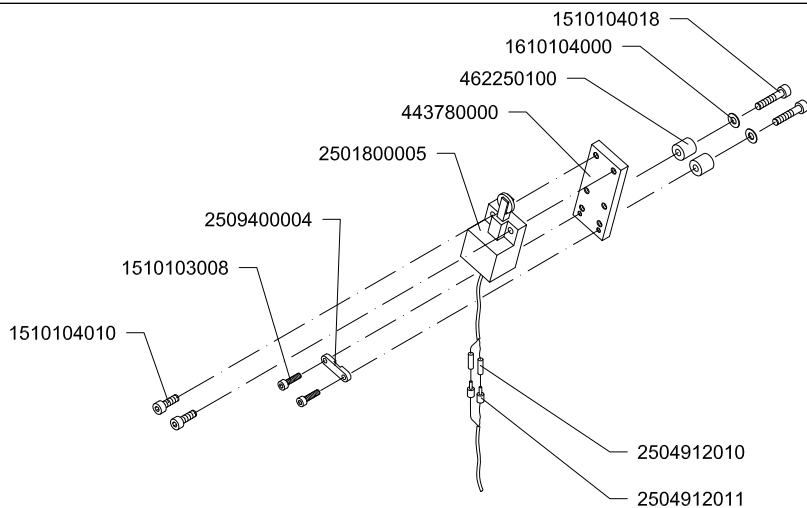
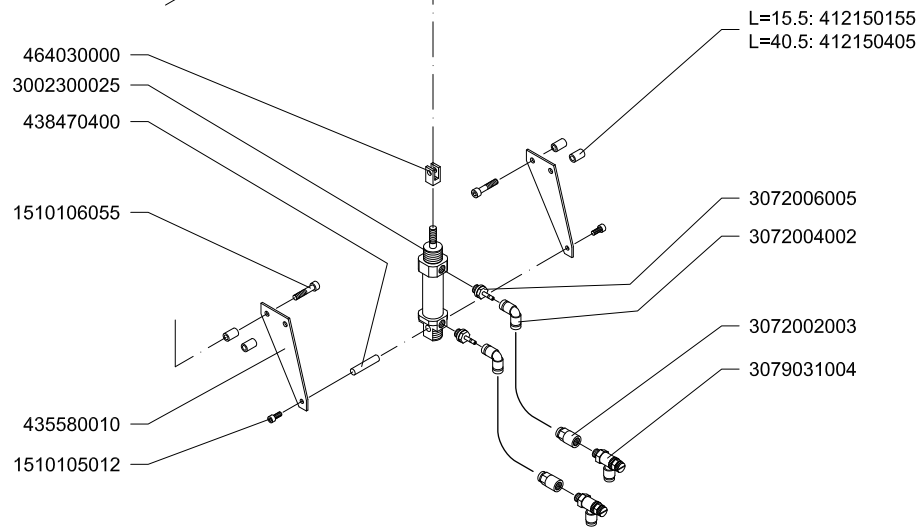
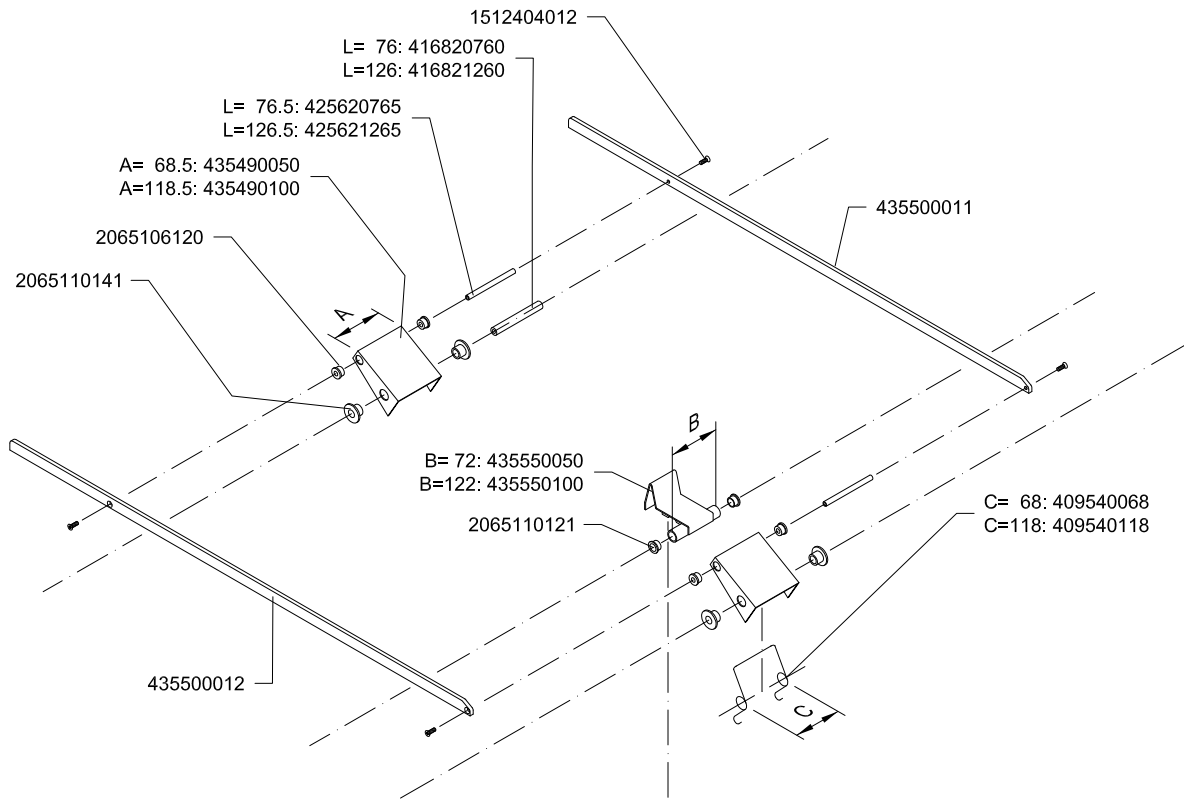
A	B	
76	612	437575050
126	612	437575100
76	821	437577050
126	821	437577100

L	1
240	416812400
265	416812650
344.5	416813445
369.5	416813695
612	416816120
821	416818210

L= 76: 416820760  
L=126: 416821260



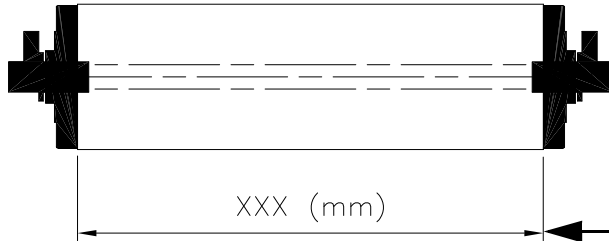
# Roller table T-55



# Roller ø48, plastic

Roller ø48, plastic

## Axle set



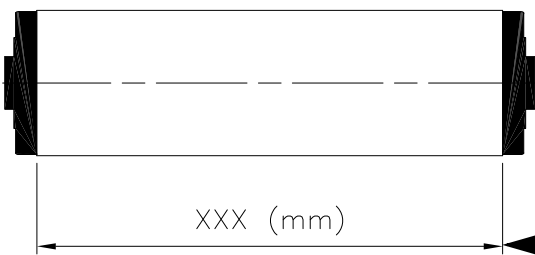
**Table 1: Axle set**

Type 48-0/0 Tube: Plastic / Axle: Alu. End bearing: Steel-black	Type 48-0/11 Tube: Plastic / Axle: Alu. End bearing: 18/8-orange
451601XXX	451602XXX

**Table 2: Axle set**

Type 13/0 Tube: Plastic / Axle: Alu End bearing: 18/8-grey/blue
453210XXX

## Roller



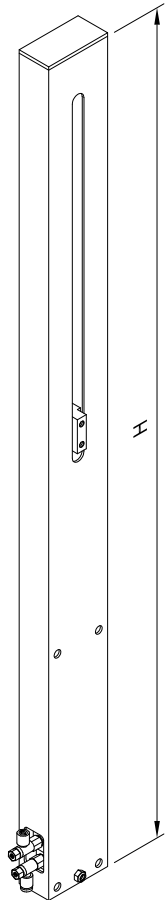
**Table 3: Roller**

Type 48-0/0 Tube: Plastic End bearing: Steel -black	Type 48-0/1 Tube: Plastic End bearing: 18/8-orange
451701XXX	451702XXX

**Table 4: Roller**

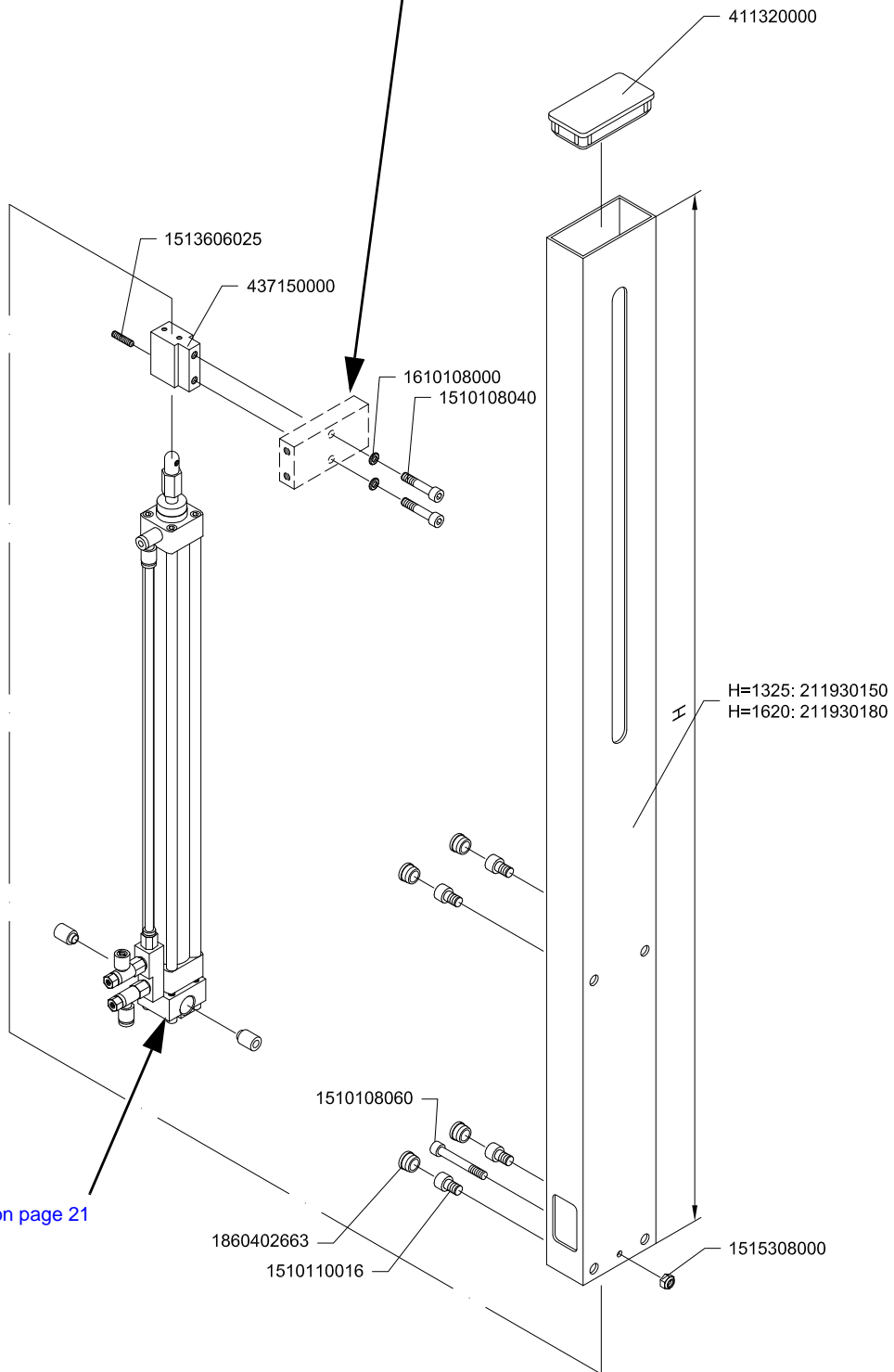
Type 13/0 Tube: Plastic End bearing: 18/8-grey/blue
413610XXX

# Pillar T-55



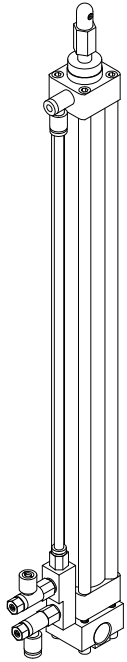
H=1325: 460460050  
 H=1620: 460460080

Se side 24: 449480000

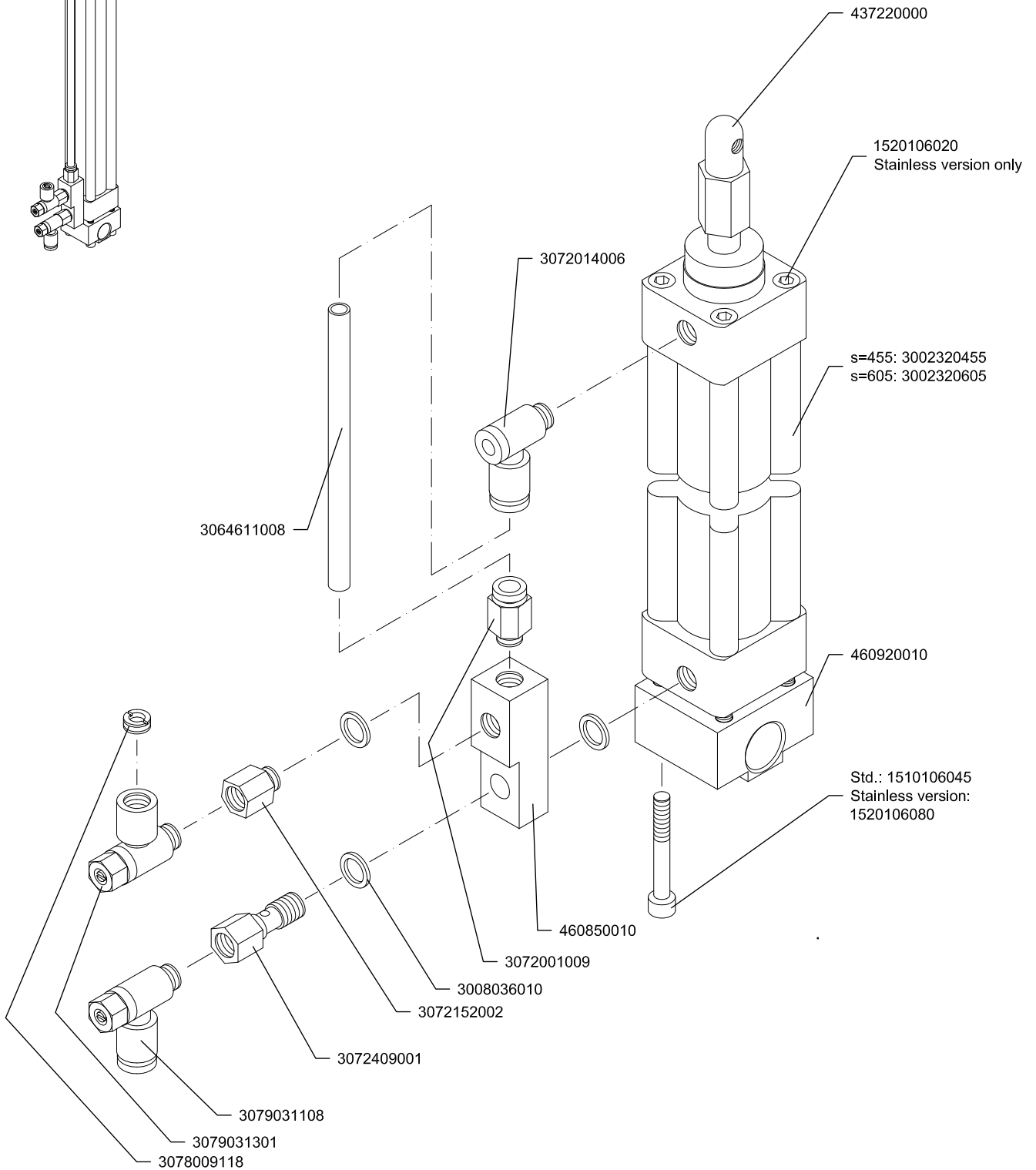


"Pillar cylinder T-55" on page 21

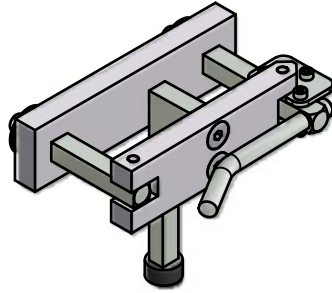
# Pillar cylinder T-55



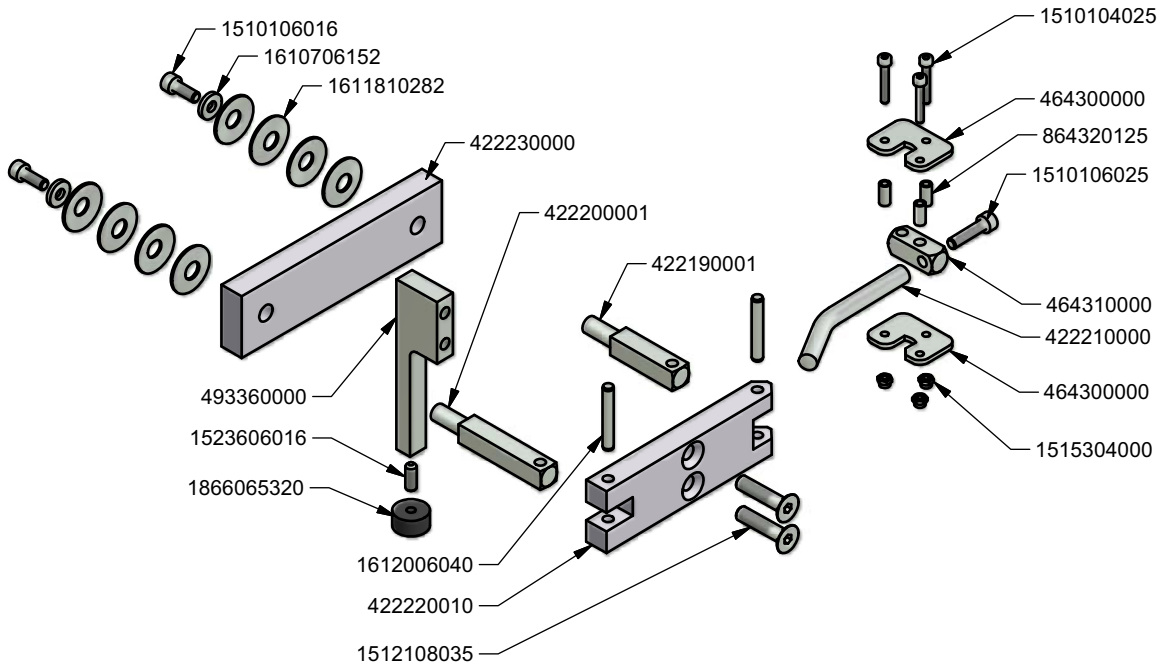
s=455: 461171050  
s=605: 461171080



# Quick pillar stop



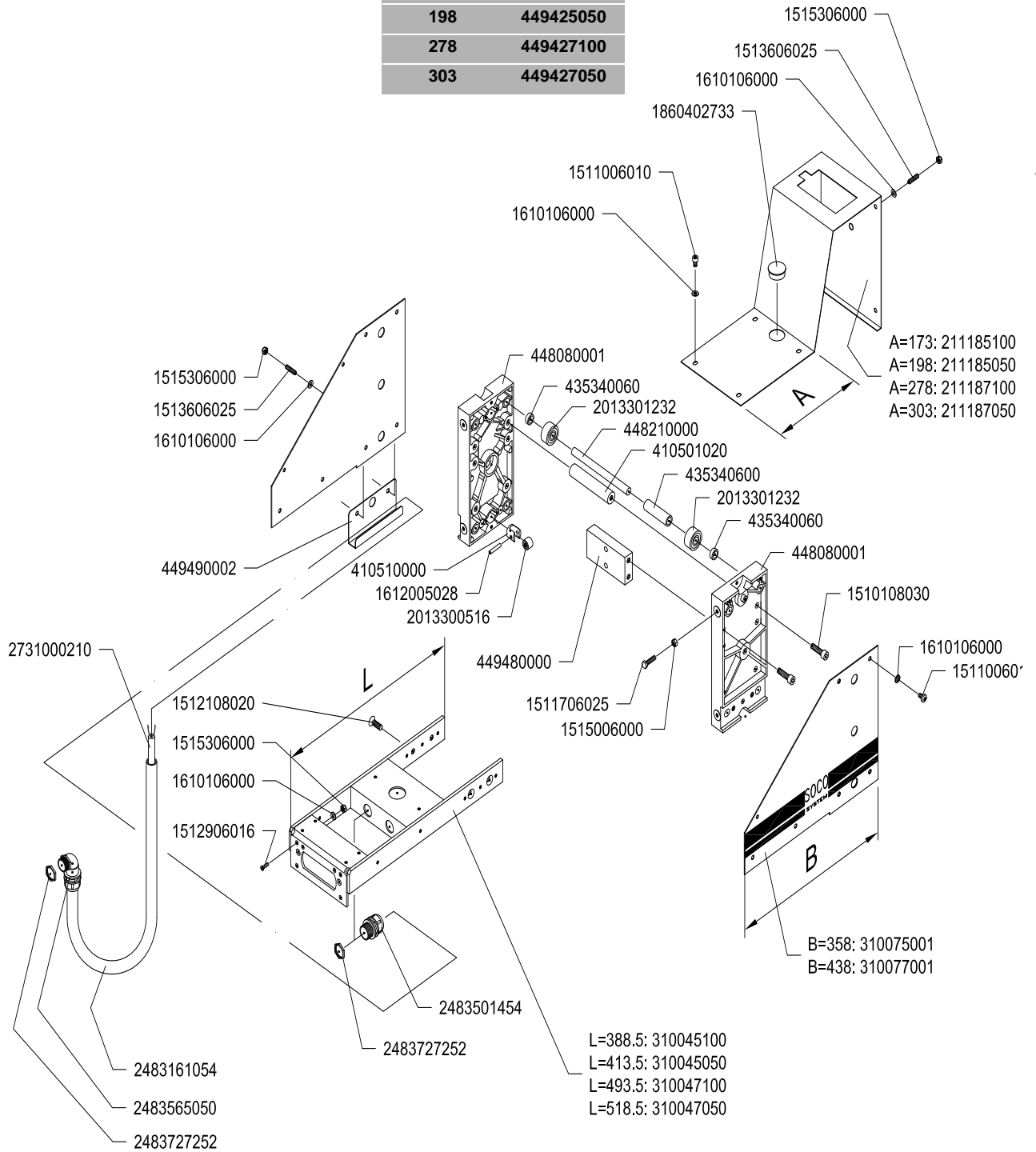
424360010



# Height adjustment unit PS, T-55

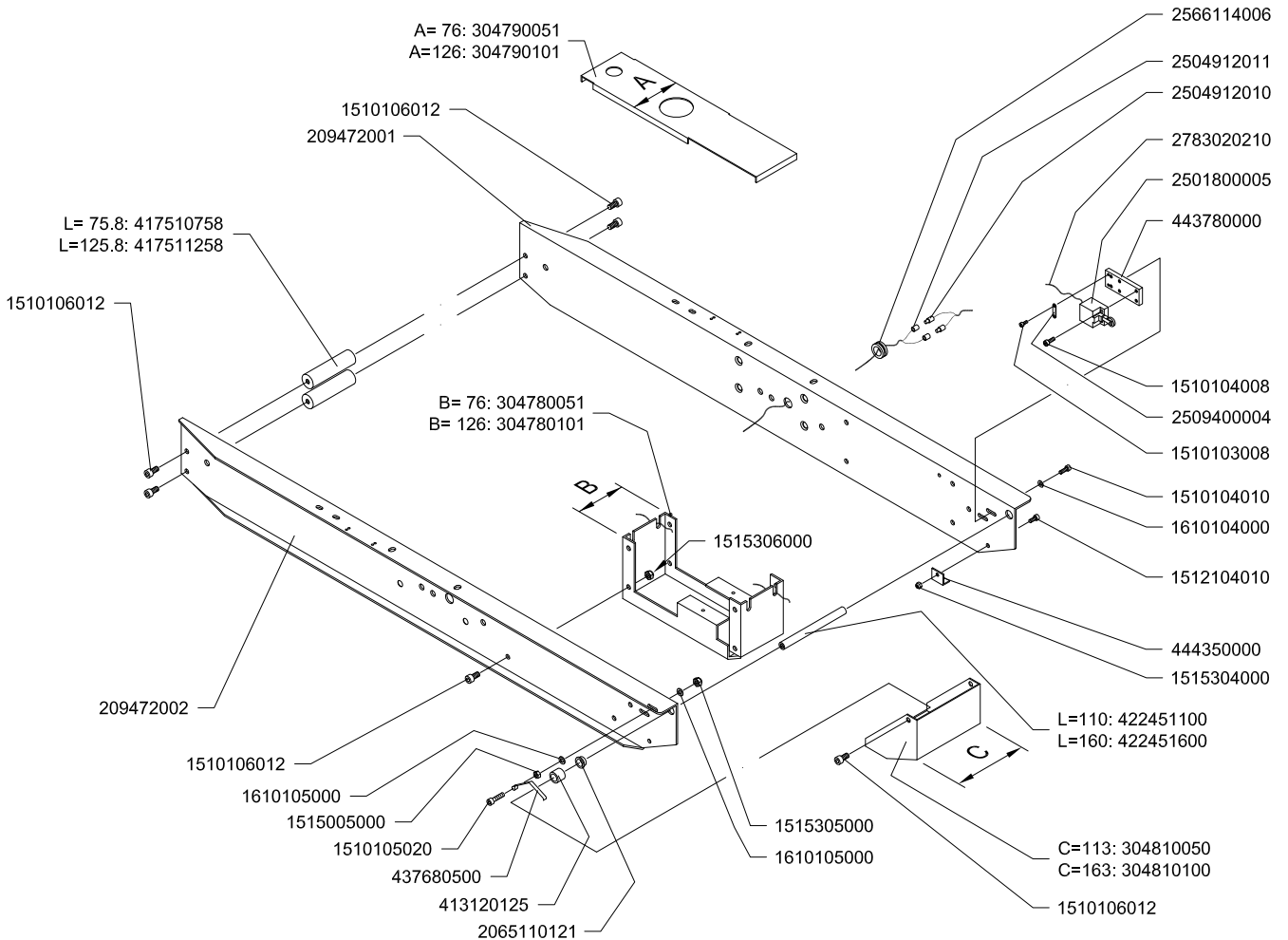
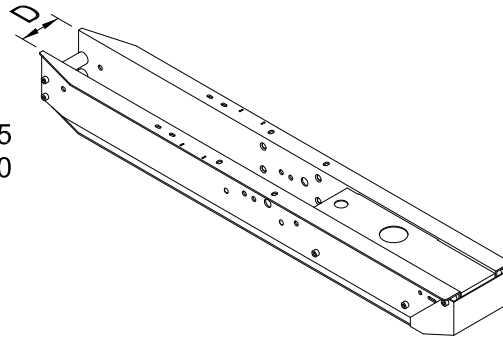
Height adjustment unit PS, T-55

A	
173	449425100
198	449425050
278	449427100
303	449427050



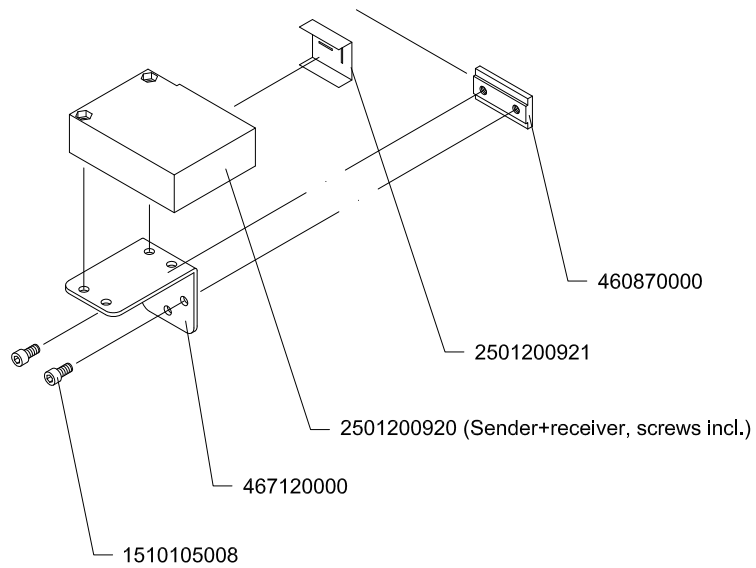
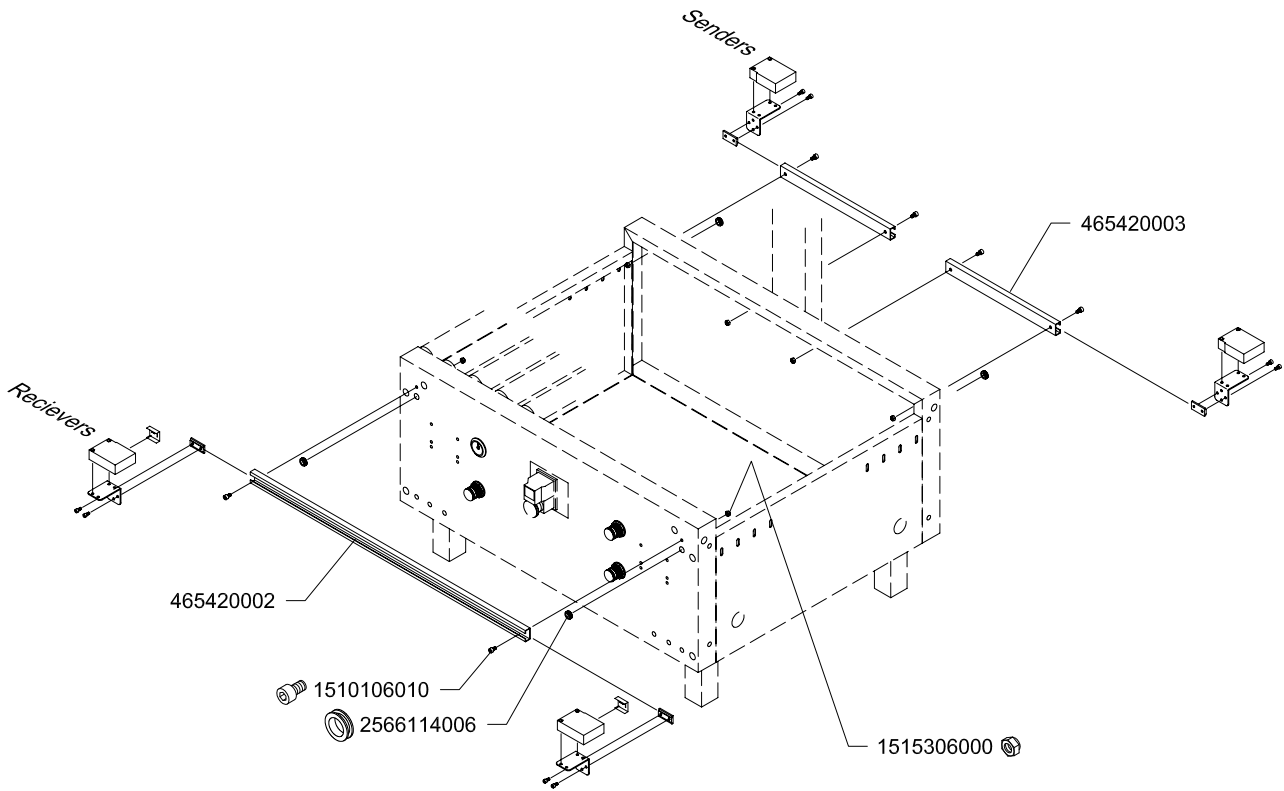
# Top assembly T-55

D= 76: 437672005  
D=126: 437672010

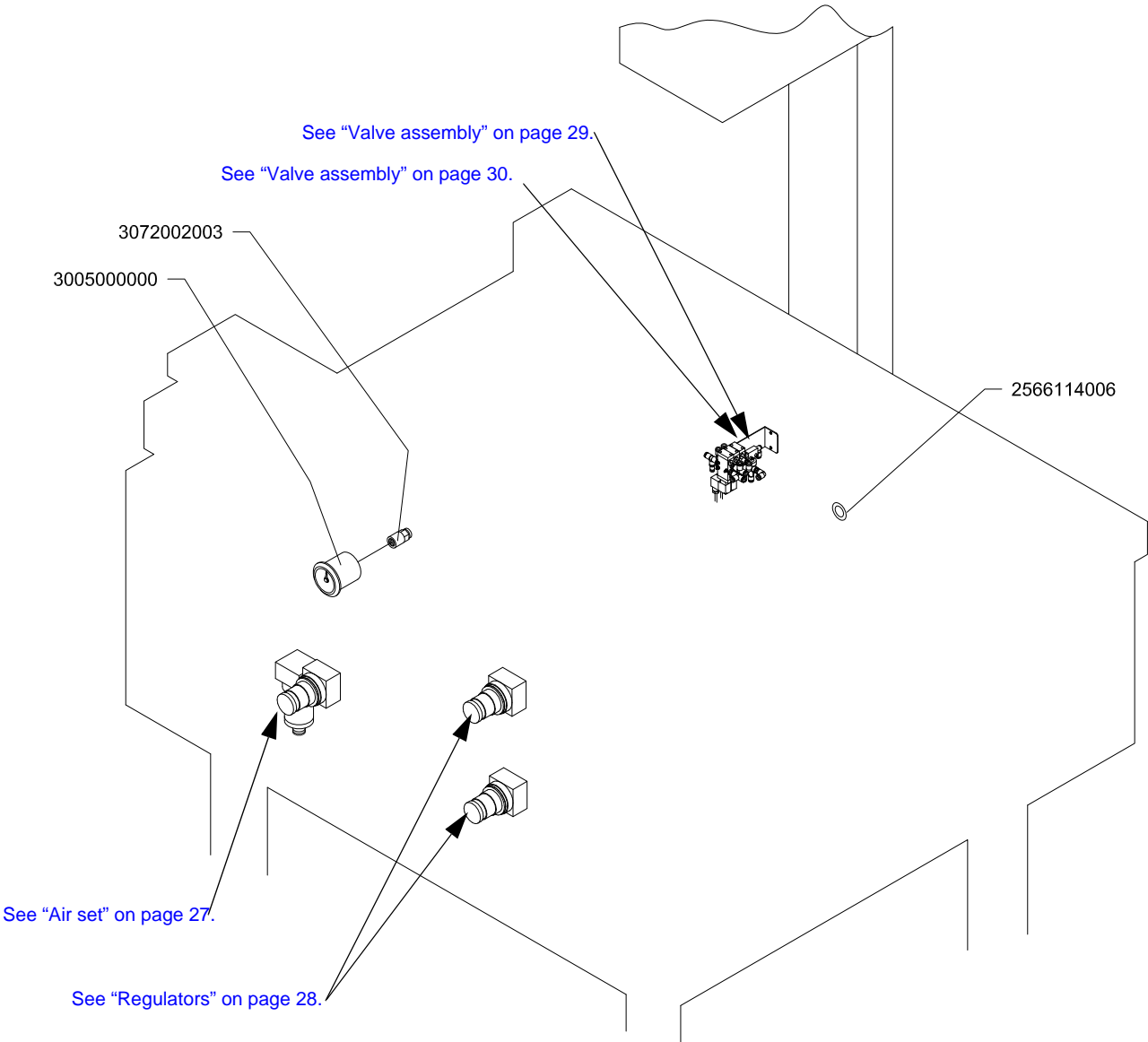


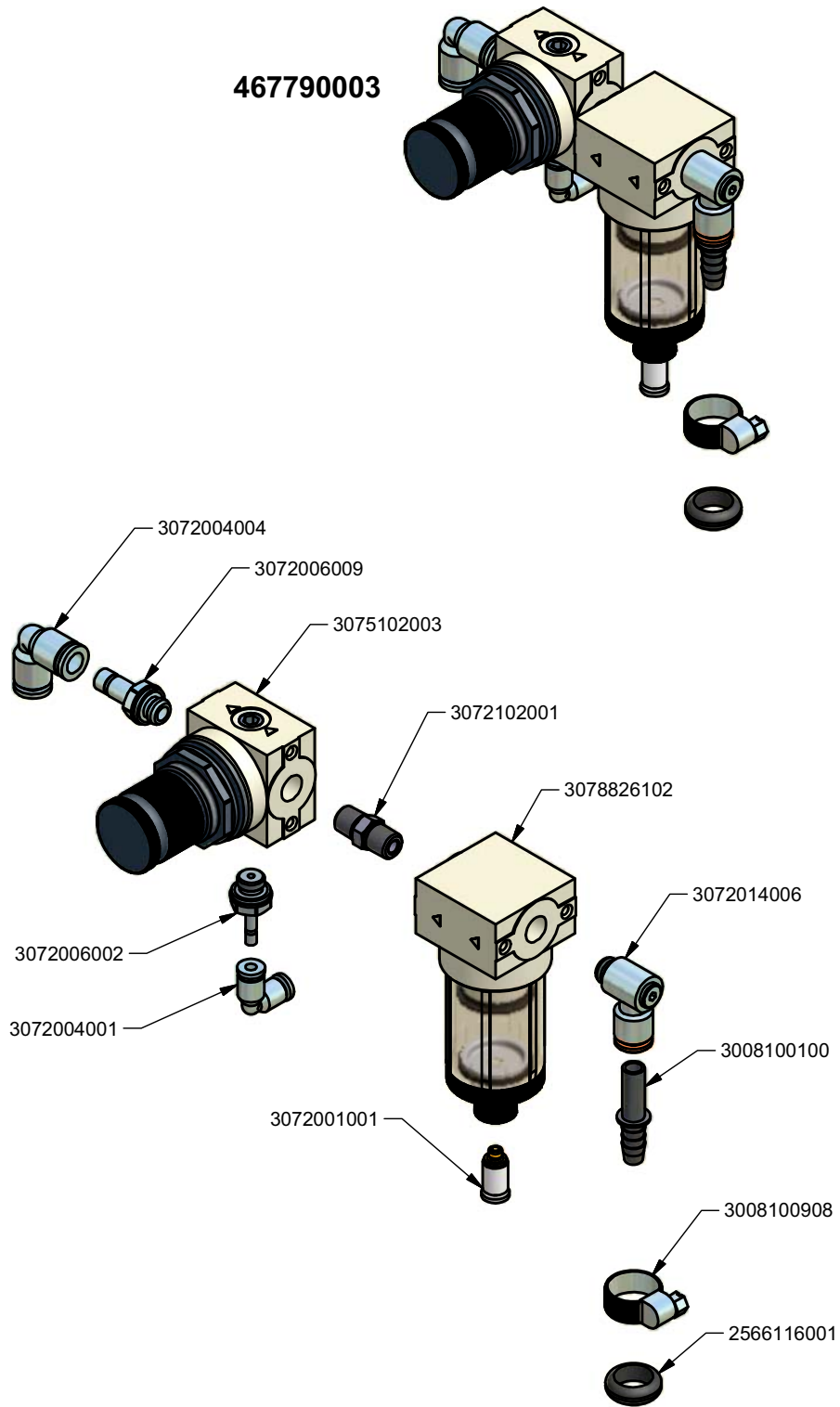
# Photo cell arrangement, T-55

Photo cell arrangement, T-55

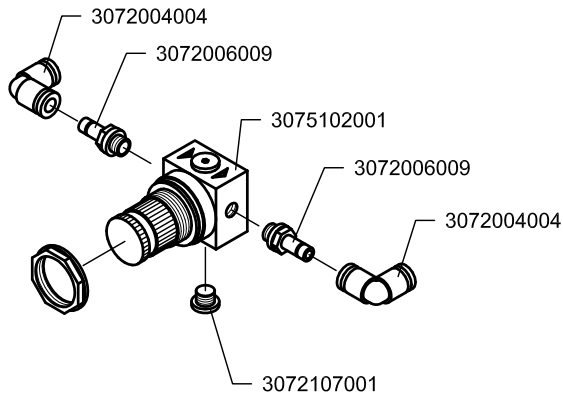


# Pneumatic arrangement, T-55

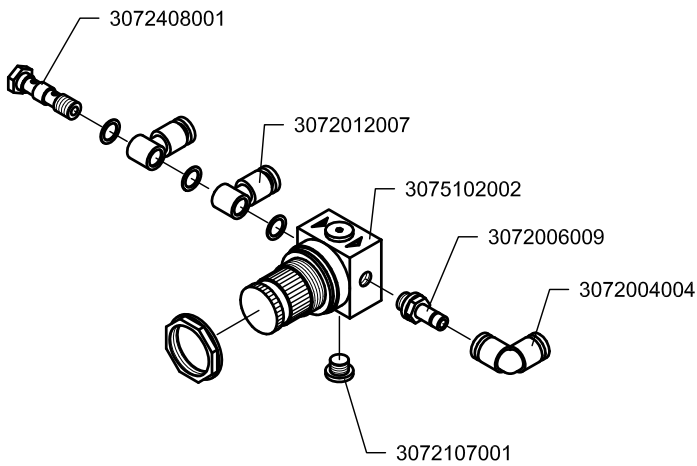




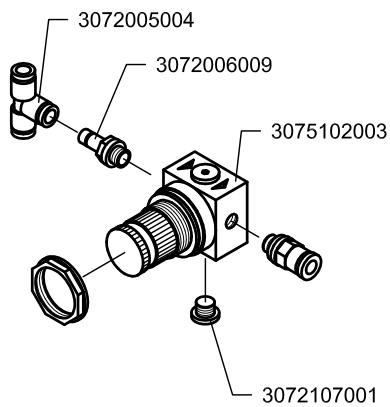
# Regulators



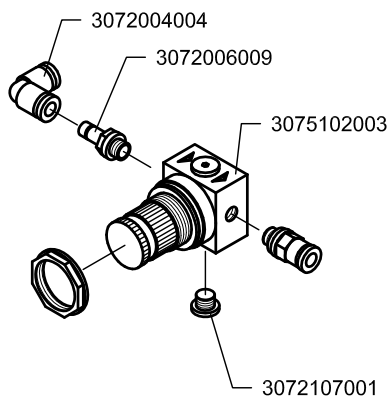
467808020  
2 BAR



467808040  
4 BAR

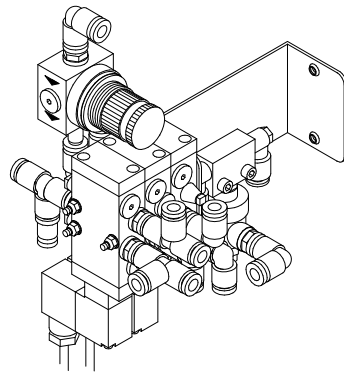


467808080  
8 BAR

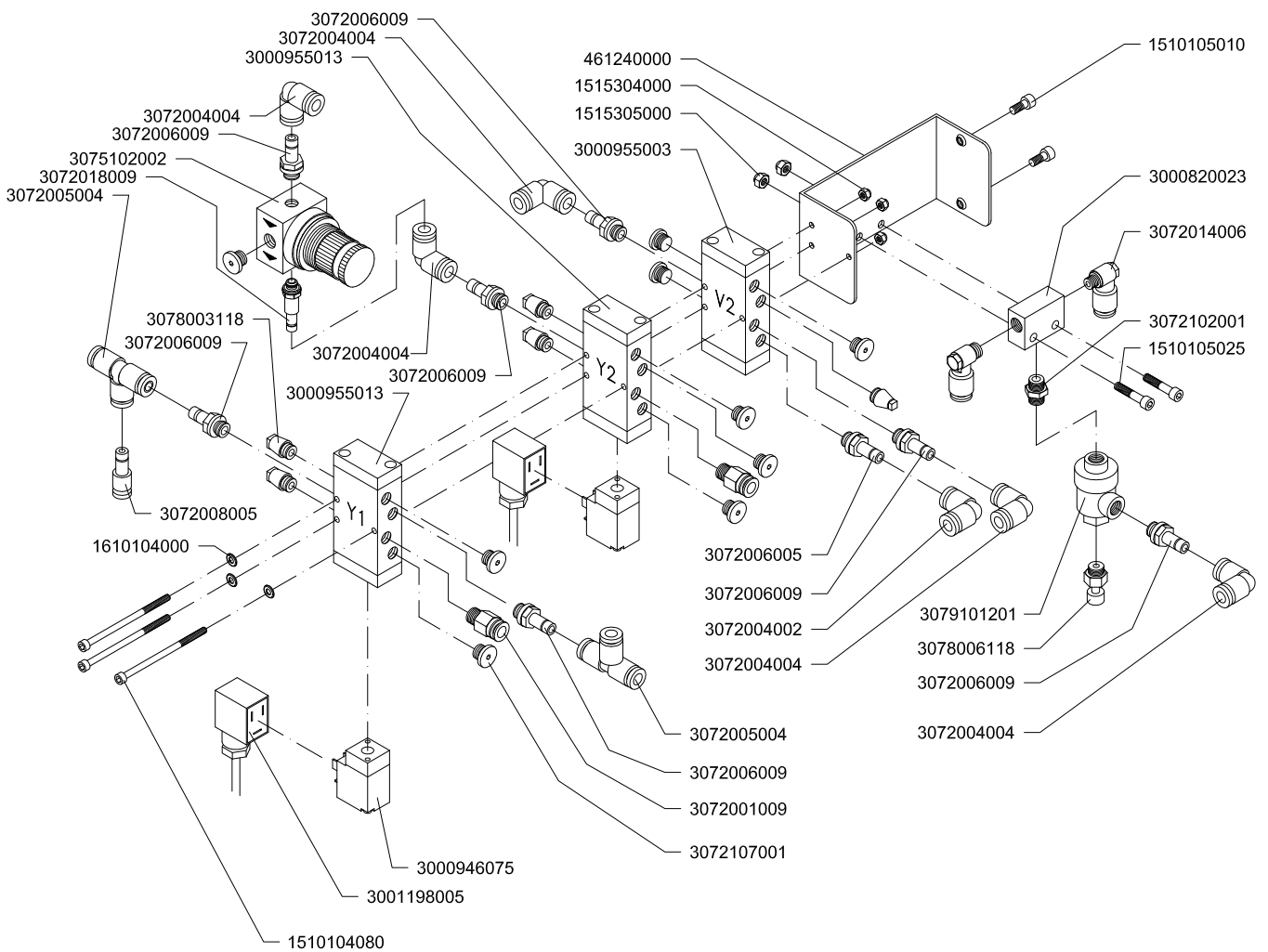


467808081  
8 BAR

# Valve assembly

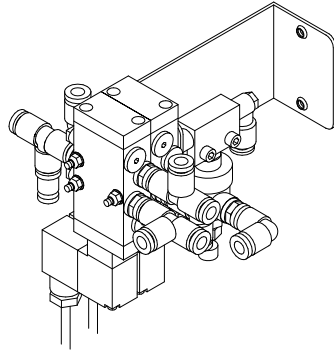


311940000

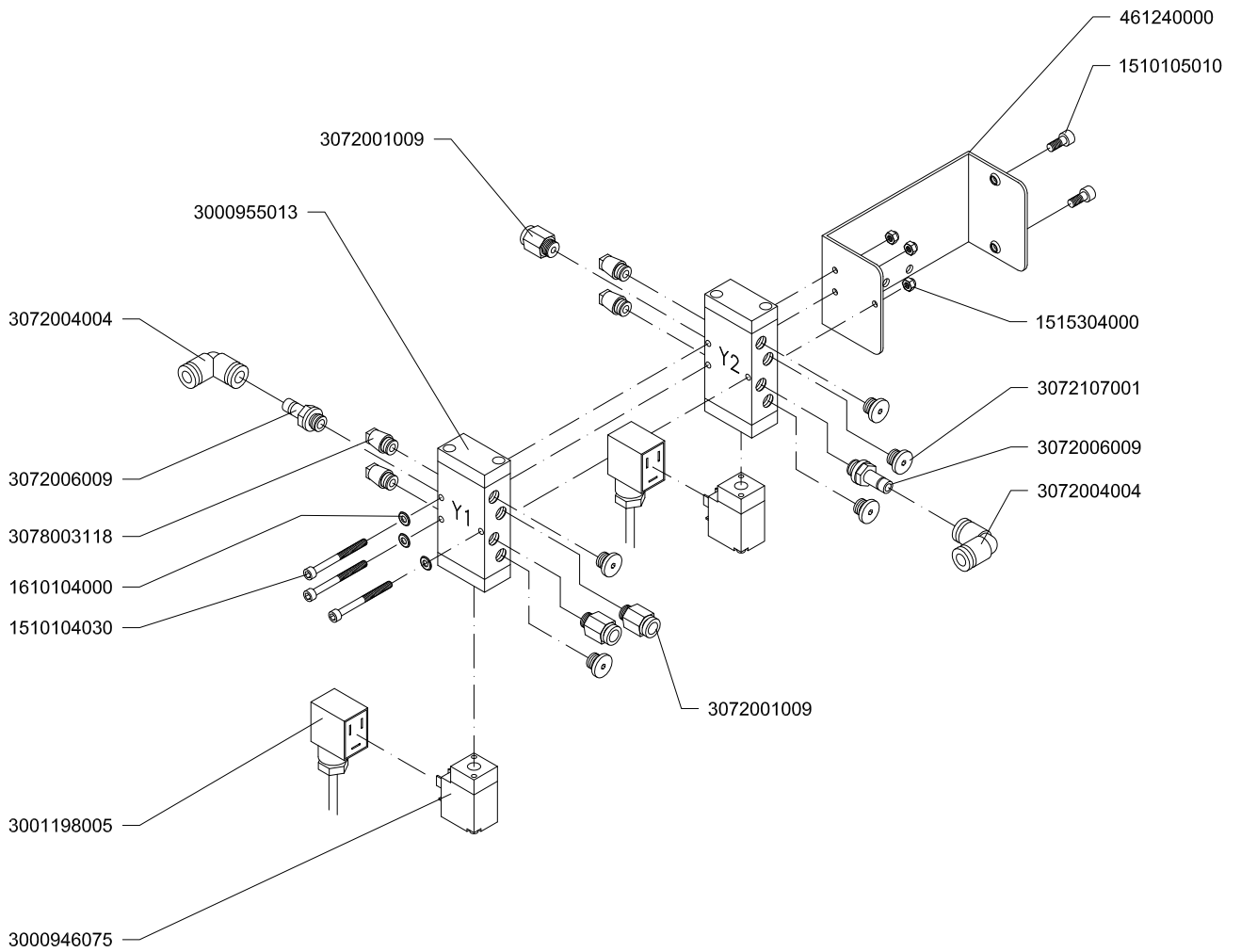


# Valve assembly

Valve assembly

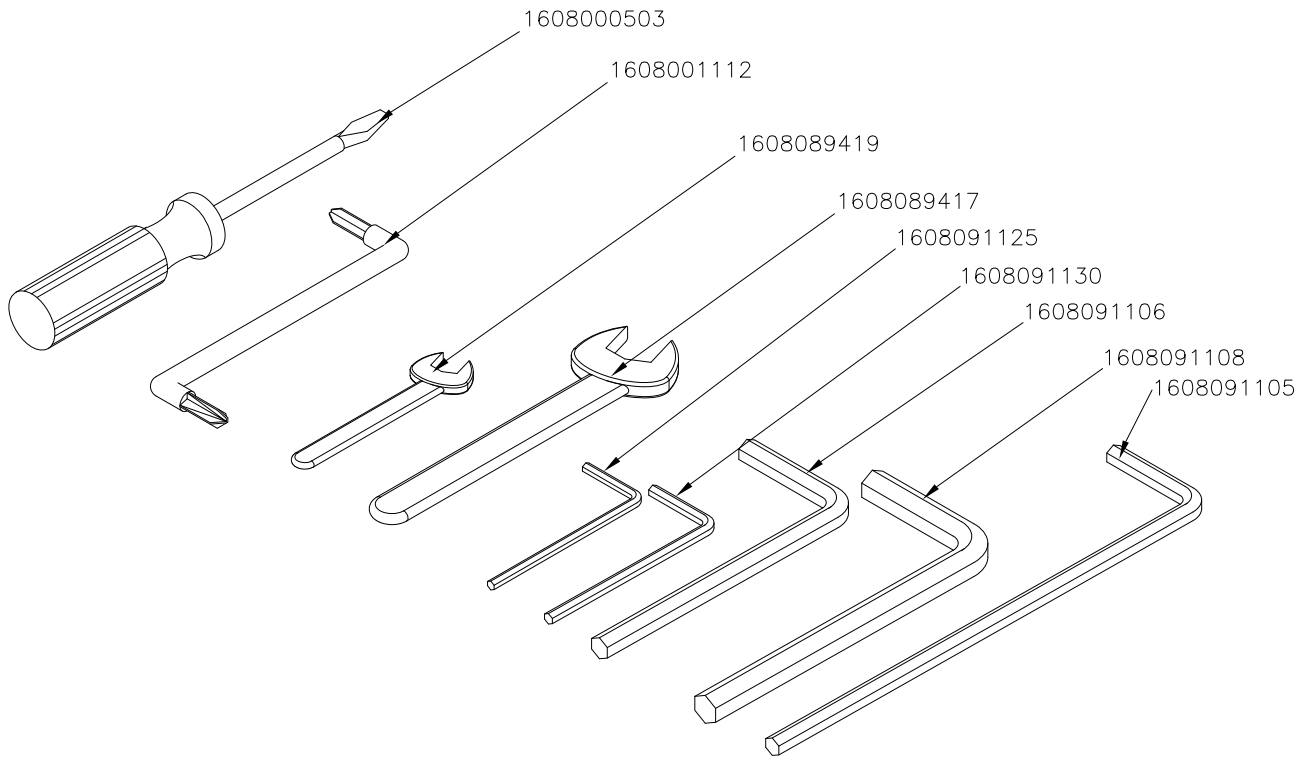


311940010

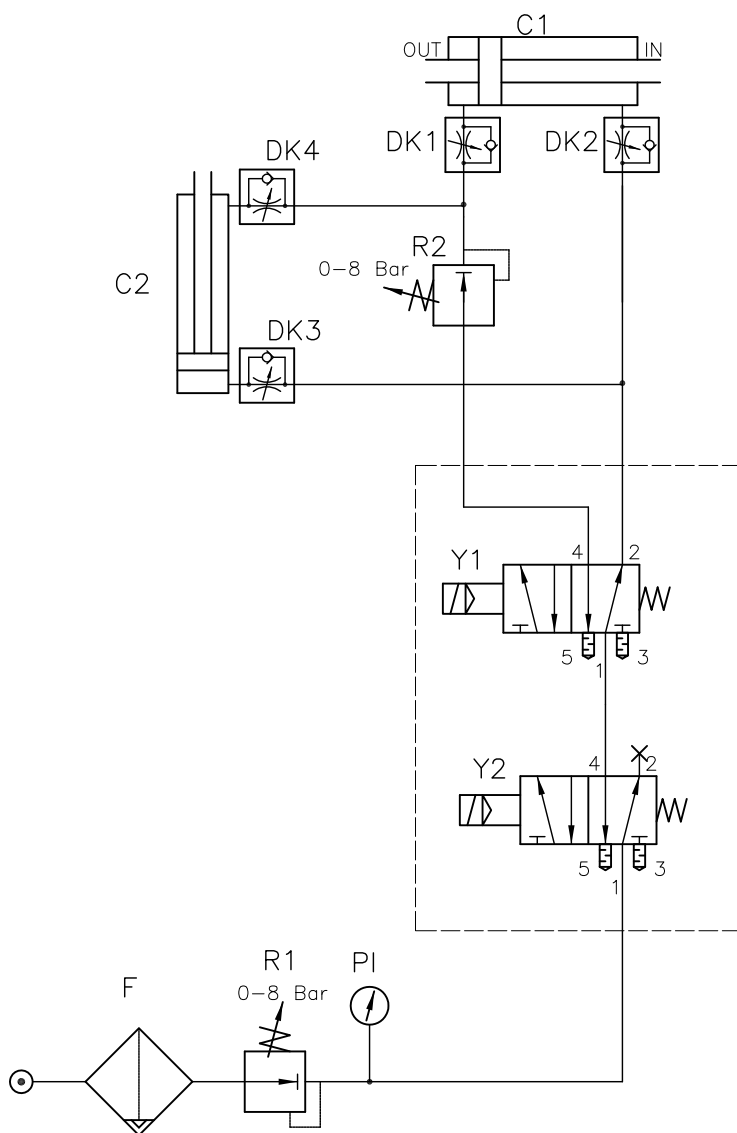


# Set of tools

Set of tools

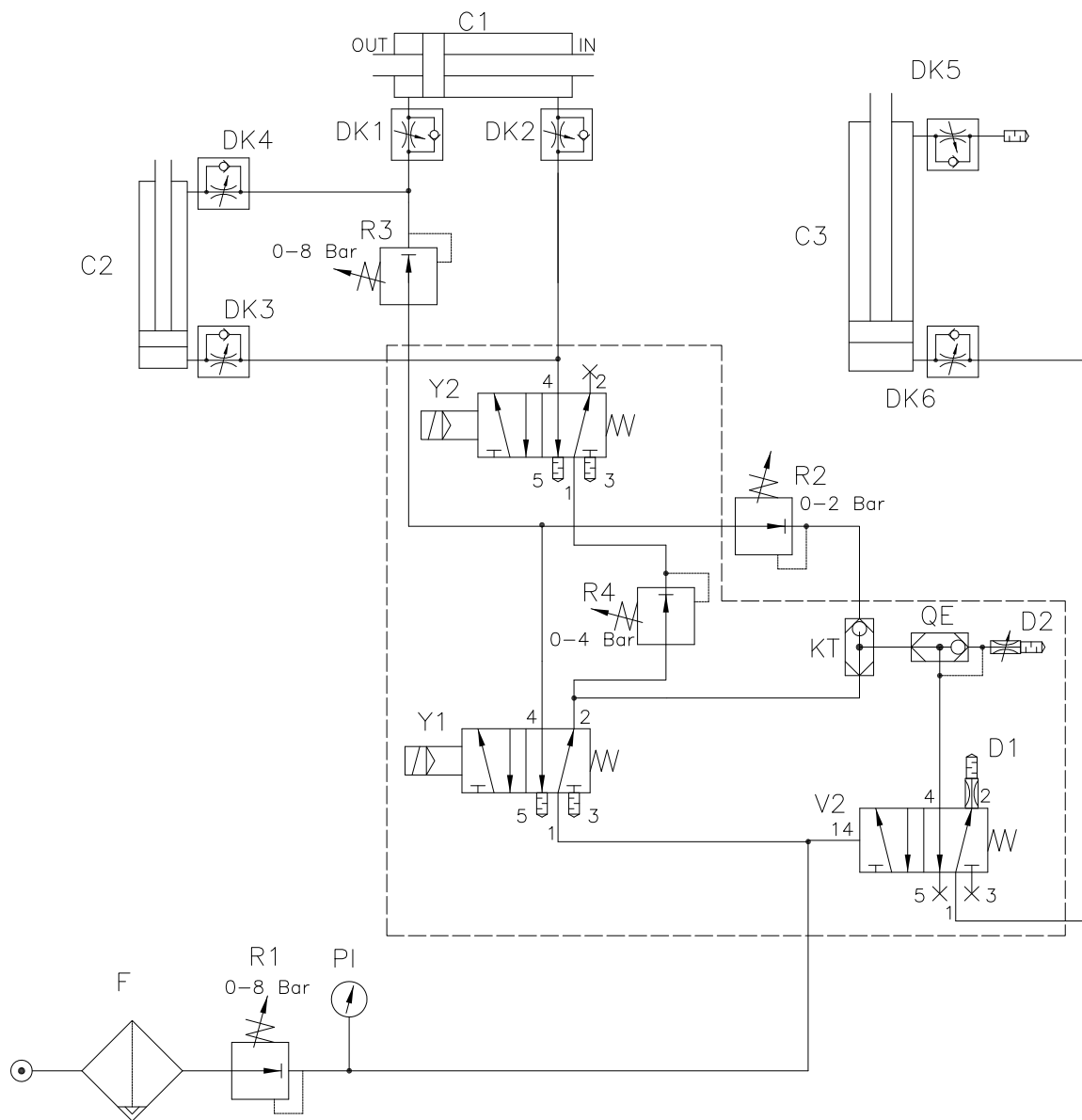


# Pneumatic diagram for T-55 bottom sealer.



- C1 :Cylinder for side guides movement
- C2 :Cylinder for lead-in stop.
- DK1 :Throttle Non-return Valve - C1 out
- DK2 :Throttle Non-return Valve - C1 in
- DK3 :Throttle Non-return Valve - C2 down
- DK4 :Throttle Non-return Valve - C2 up
- F :Filter unit
- PI :Manometer
- R1 :Regulator - working pressure
- R2 :Regulator - top assembly down (soft touch)
- Y1 :Solenoid Valve - cylinder movements
- Y2 :Safety valve - emergency stop

# Pneumatic diagram for T-55 std.



- C1 :Cylinder for side guides movement
- C2 :Cylinder for lead-in stop.
- C3 :Cylinder for pillar
- D1 :Throttle for safety valve (C3 down)
- D2 :Throttle Valve for C3 down
- DK1 :Throttle Non-return Valve - C1 out
- DK2 :Throttle Non-return Valve - C1 in
- DK3 :Throttle Non-return Valve - C2 down
- DK4 :Throttle Non-return Valve - C2 up
- DK5 :Throttle Non-return Valve - C3 up
- DK6 :Throttle Non-return Valve - C3 up
- F :Filter unit

- KT :T-valve
- PI :Manometer
- QE :Quick Exhaust valve
- R1 :Regulator - working pressure
- R2 :Regulator - top assembly down (soft touch)
- R3 :Regulator - driven side guides (in pressure)
- R4 :Regulator - driven side guides (out pressure)
- V2 :Safety valve - air failure
- Y1 :Solenoid Valve - cylinder movements
- Y2 :Safety valve - emergency stop